

Herold - Reicks Surveying, 25 1/2 East Main Street, Suite 204, New Hampton, IA 50659, Ph. 641-394-2725

UNITED STATES PUBLIC LAND SURVEY CORNER CERTIFICATE

Land Survey Monuments situated in Section 17, Township 96 North, Range 11 West of the Fifth Principal Meridian, Chickasaw County, Iowa.
Previously recorded in N/A in County Recorder's Office.
(book, page, document number, etc.)

(Show reason for preparing this certificate, the evidence and detailed procedures used in establishing the corner positions and monumentation found or placed.)

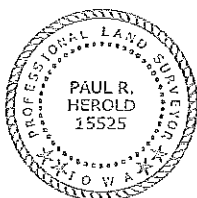
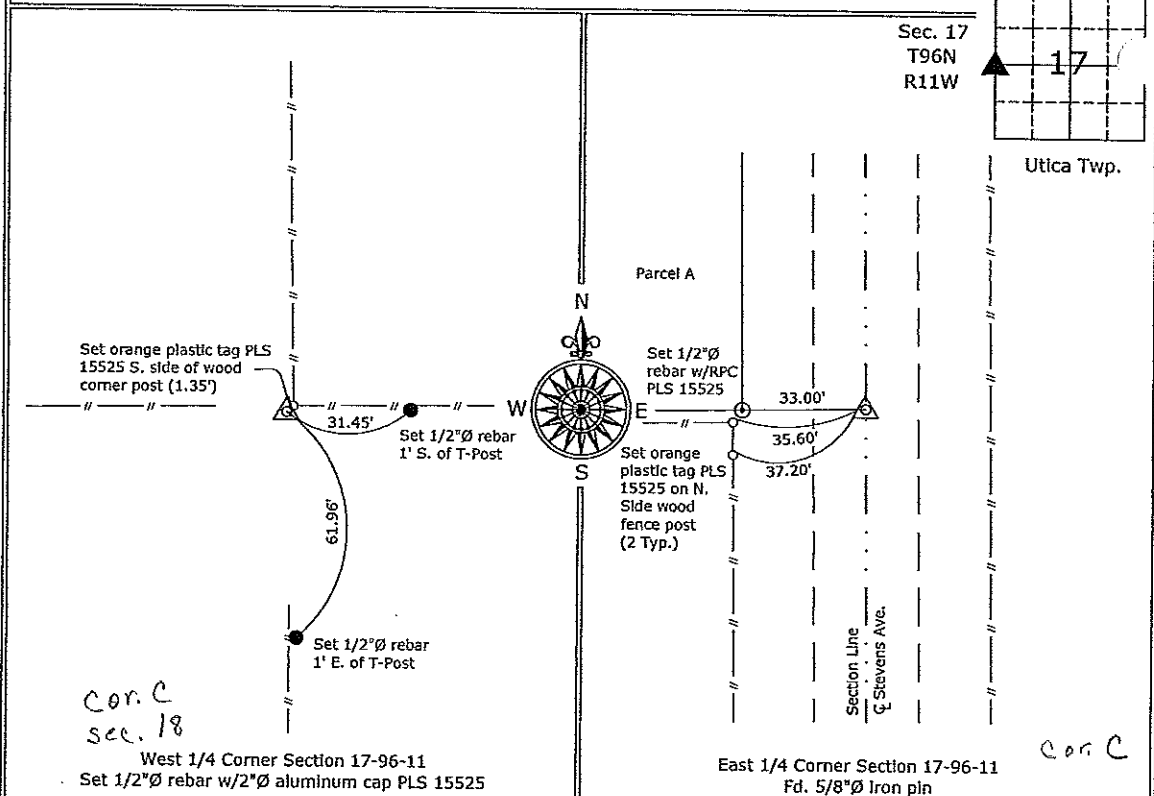
Monument Description and Remarks:

West 1/4 Corner - Set 1/2"Ø rebar with 2"Ø aluminum cap PLS 15525 at the intersection of possession line fences.

East 1/4 Corner - Found 5/8"Ø iron pin from information obtained from the Chickasaw County Engineer's office in field book "Utica Twp. Section Corner Ties" Section 17, corner "C".

PLAN - VIEW

(Show a minimum of three reference ties to durable physical objects, relevant monuments and physical conditions that will enable recovery of the corner.)



I hereby certify that this land surveying document was prepared and the related survey work was performed by me or under my direct personal supervision and that I am a duly licensed Land Surveyor under the laws of the State of Iowa.

Paul R. Herold 1-30-07
Paul R. Herold Date:

License number 15525
My license renewal date is December 31, 2008.
Sheets covered by this seal: Sheet P1

List Corners to be Indexed			
Corners	Section	Twp.	Range
W 1/4	17	96	11
E 1/4	17	96	11

S:\Projects\2007\2007-005\dwg\2007-005.dwg

Project Number:2007-005

FB: Chickasaw County 1, Pgs. 2-3

ENG. COPY