

FILED 2002-2746

RECORDER'S OFFICE

CHICKASAW COUNTY, IOWA

2002 NOV 13 AM 8 34

CINDY MESSERSMITH  
COUNTY RECORDER

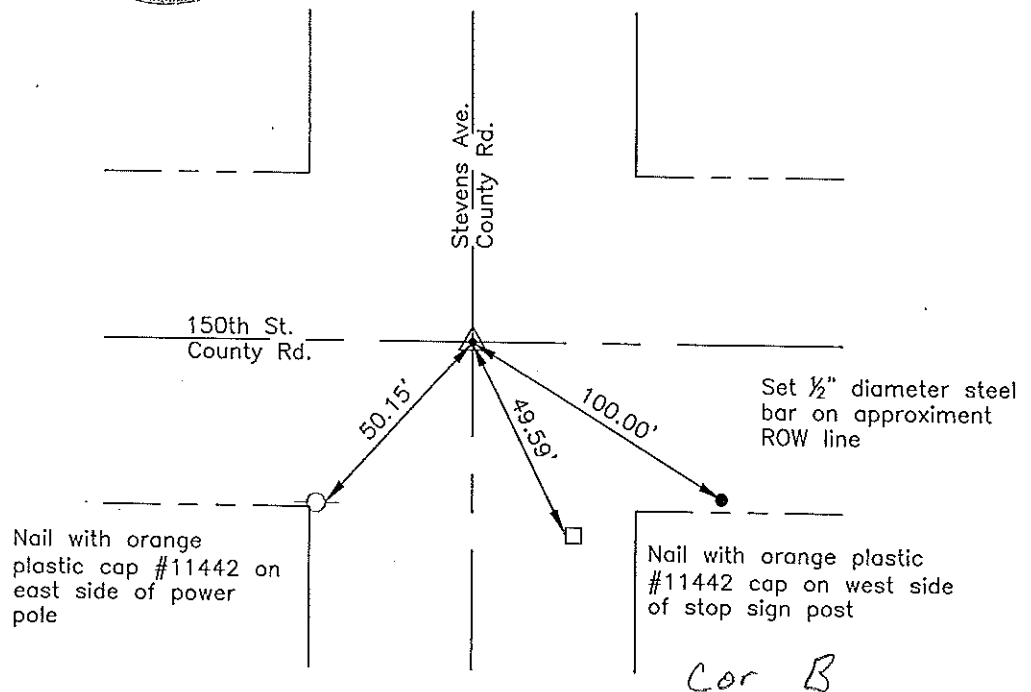
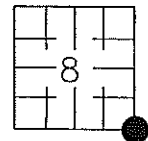
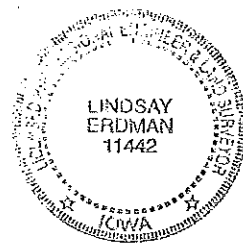
Prepared by: Erdman Engineering, P.C. 708 Commerce Drive, P.O. Box 246 Decorah, Iowa 52101, (563)382-4194

United States Public Land Survey Corner Certificate  
of

Land Survey Monuments situated in Section 8, Township 96, Range 11 West of the 5th Principal Meridian in Chickasaw County, Iowa. Previously recorded in does not apply in the county Recorder's Office.

Monument Description and Remarks: This certificate is prepared in accordance with Section 193C of the Code of Iowa. No previous certificate has been filed for this corner location. Based on Chickasaw County Engineer's Reference Ties, we searched for the tie markers previously set. We did not find any. We found a  $\frac{5}{8}$ " diameter steel bar down  $\pm 12$ " below the crushed rock surface of the County Road, with wood stakes on the east and west side that matches the description of the monument used previously as the SE Corner of Section 8. We set  $\frac{1}{2}$ " diameter steel bar with  $1\frac{1}{2}$ " aluminum cap #11442 over top of existing monument.

## Plan-View



I hereby certify that the survey work was completed and this certificate was prepared by me or under my direct supervision and that I am a duly registered land surveyor under the laws of the State of Iowa.

Signature: Lindsay Erdman P.E. and L.S.

Date: 11/5/02 Reg. No. 11442

My license renewal date is December 31, 2002

## Corner(s) to be Indexed

Corner	Section	Township	Range
SE	8	96	11

Filed 11-18-02