



Prepared by & Return to: Herald - Reicks Surveying, 10 East Main Street, New Hampton, IA 50659, Ph. 641-394-2725

United States Public Land Survey Corner Certificate

Land Survey Monument situated in
 Section 15, Township 96 North, Range 11 West of the Fifth Principal Meridian, Chickasaw County, Iowa.
 On file in Document #2005-1696 in the County Recorder's office.

This certificate is being prepared in compliance with Iowa Code Chapter 355.11 because:



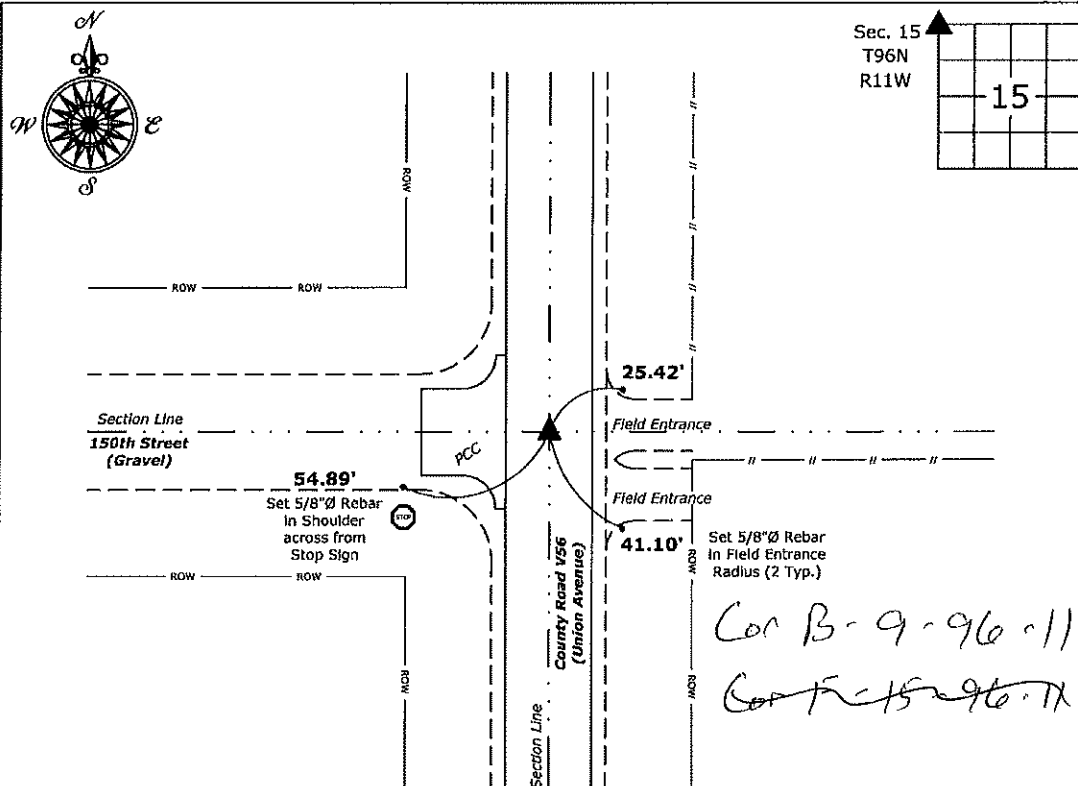
- ☐ There is no certificate on file for this corner.
- ☐ There are no longer three valid ties of record.
- ☐ There are changes to reference ties of record.
- ☒ There is change of monumentation of record.
- ☐ To clarify description of record monument (ties).

Monument Description and Remarks:

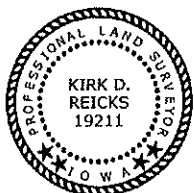
Northwest Corner: Set 1"Ø Bronze Survey Marker PLS 19211 at previous location (Found PK Nail) with coordinates of the Corner obtained prior to highway reconstruction, Project No. FM-C019(89)--55-19.

Plan View

(Show a minimum of three reference ties to durable physical objects, relevant monuments and physical conditions that will enable recovery of the corner.)



Northwest Corner of Section 15-96-11
 Set 1"Ø Bronze Survey Marker PLS 19211



I hereby certify that this land surveying document was prepared by me or under my direct personal supervision and that I am a duly licensed Land Surveyor under the laws of the State of Iowa.

Kirk D. Reicks 6-17-20
 Kirk D. Reicks Date:

License number 19211
 My license renewal date is December 31, 2020.
 Sheets covered by this seal: Individual sheet only

List Corner to be Indexed

Corner	Section	Twp.	Range
NW	15	96	11

Project Number: 2019-810

FB: 2019 Construction, Pgs. 14-36

Section 9-96-11
As referred to in
Engr. Title Book

2005-1696

DANIEL T. CRAWFORD, P.E. & L.S. Crawford Engineering & Surveying, Inc., Independence, Iowa 319/334-7077

UNITED STATES PUBLIC LAND SURVEY CORNER CERTIFICATE

Land Survey Monuments situated in Section 15 ^{OF} 9, Township 96 N, Range 11 W, of the Fifth Principal Meridian, Chickasaw County, Iowa.
Previously recorded in N/A In County Recorder's Office.

Monument Description and Remarks:

Reason for preparing certificate: Corner certificate for NE and NW Corners of Section 15 are not on file.

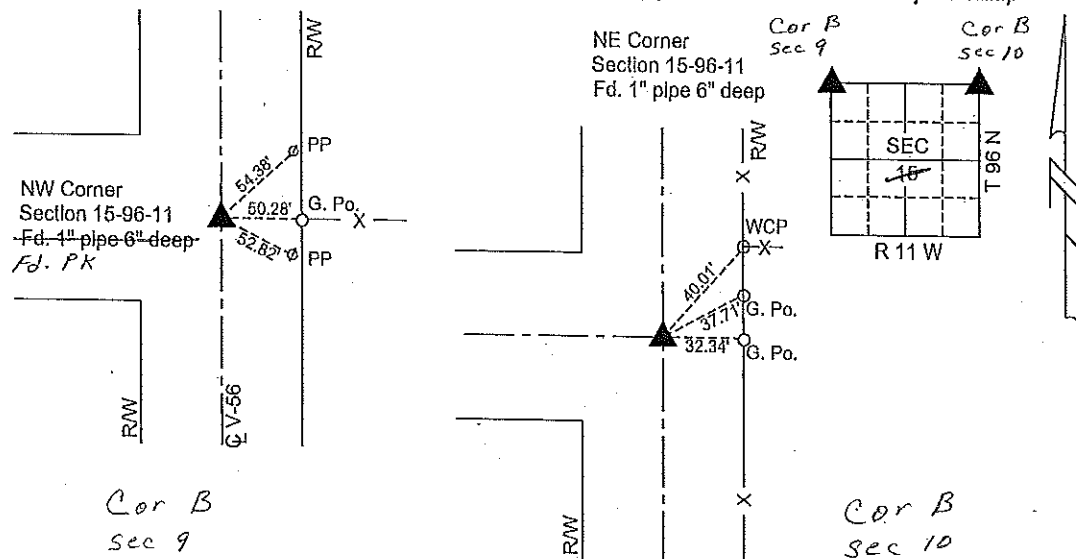
Evidence and detailed procedure used to establish corner position: Corner position established, see below.

Monumentation found or placed: NW Corner - Found P-K nail in ACC pavement.

NE Corner - Found 1" pipe 6" deep in road.

PLAN-VIEW

(Show a minimum of three reference ties to durable physical objects, relevant monuments and physical conditions that will enable recovery of the corner).



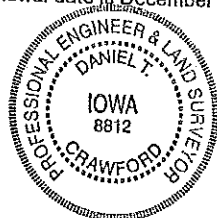
I hereby certify that the survey work was completed and this land surveying document was prepared by me or under my direct personal supervision and that I am a duly licensed land surveyor under the laws of the State of Iowa.

Signature: Daniel T. Crawford
DANIEL T. CRAWFORD, P.E. & L.S.

Date: 8-10-05 Reg. No. 8812

My license renewal date is December 31, 2005

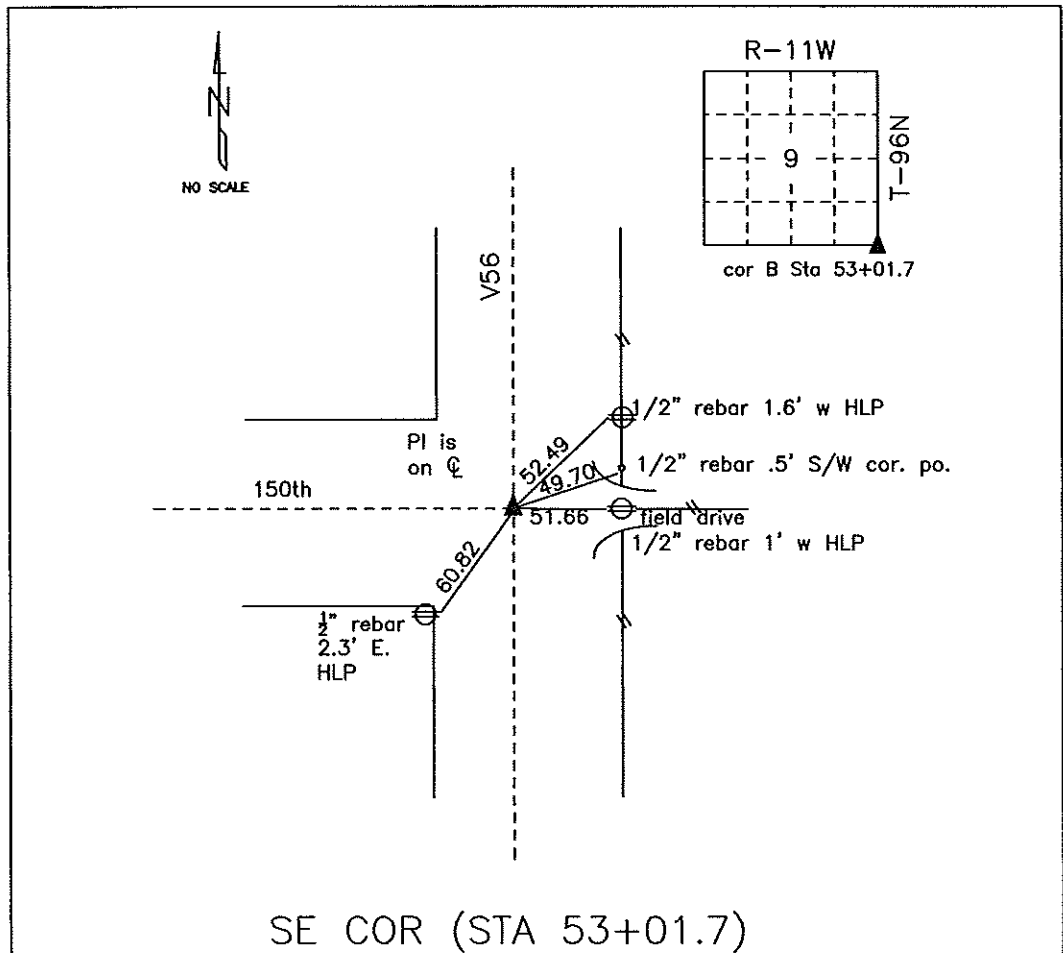
SEAL



Corners	List Corners to be Indexed		
	Section	Twp.	Range
NW Corner	15	96 W	11 W
NE Corner	15	96 W	11 W

COUNTY ENGINEER'S SECTION CORNER PRESERVATION RECORD

LAND SURVEY MONUMENT LOCATED IN SECTION 9, TOWNSHIP 96 N
NORTH, RANGE 11 W, OF THE 5TH P.M. Chickasaw COUNTY, IOWA
PREVIOUSLY RECORDED BOOK 2005 PG 1696



MONUMENT DESCRIPTION AND NARRATIVE Found PK nail in HMA mat

Last recording was by Daniel Crawford 8/10/05. From Chickasaw County Project plans SN-188(9) found PI
is on center line. Information was also found in engineer tie book.

All ties are GPS surveyed.

I AM NOT A REGISTERED LAND SURVEYOR UNDER THE LAWS OF THE STATE OF IOWA

JIM FOSTER CHICKASAW CO. DATE: 07/23/10