

Section 9-96-11
As referred to in
Engr. Tax Book

2005-1696

DANIEL T. CRAWFORD, P.E. & L.S. Crawford Engineering & Surveying, Inc., Independence, Iowa 319/334-7077

UNITED STATES PUBLIC LAND SURVEY CORNER CERTIFICATE

Land Survey Monuments situated in Section 15 ⁹ OF 96 N, Township 11 W, Range 96 N, of the Fifth Principal Meridian, Chickasaw County, Iowa.
Previously recorded in N/A In County Recorder's Office.

Monument Description and Remarks:

Reason for preparing certificate: Corner certificate for NE and NW Corners of Section 15 are not on file.

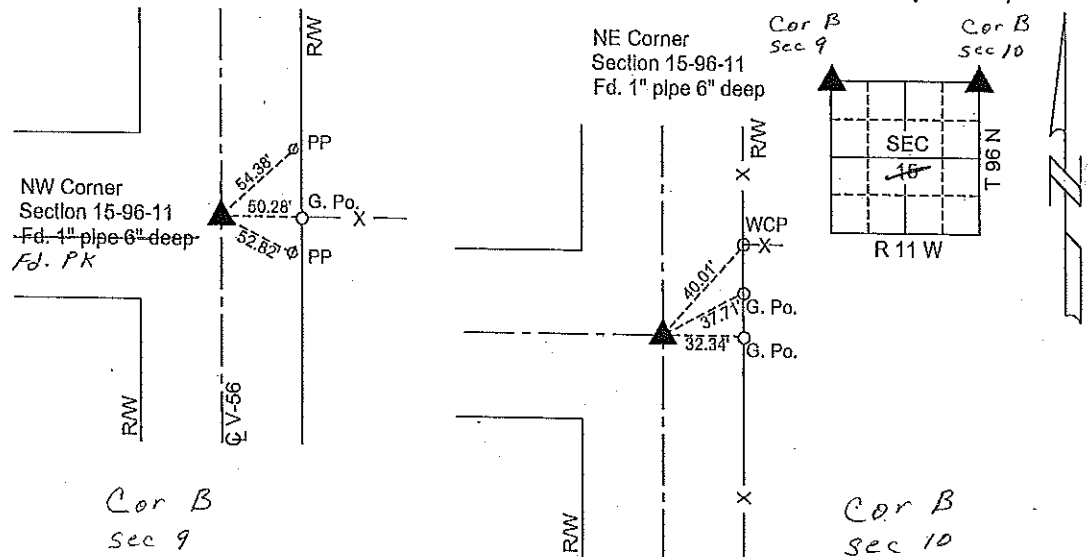
Evidence and detailed procedure used to establish corner position: Corner position established, see below.

Monumentation found or placed: NW Corner - Found P-K nail in ACC pavement.

NE Corner - Found 1" pipe 6" deep in road.

PLAN-VIEW

(Show a minimum of three reference ties to durable physical objects, relevant monuments and physical conditions that will enable recovery of the corner).



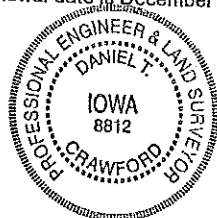
I hereby certify that the survey work was completed and this land surveying document was prepared by me or under my direct personal supervision and that I am a duly licensed land surveyor under the laws of the State of Iowa.

Signature: Daniel T. Crawford
DANIEL T. CRAWFORD, P.E. & L.S.

Date: 8-10-05 Reg. No. 8812

My license renewal date is December 31, 2005

SEAL



Corners	List Corners to be Indexed		
	Section	Twp.	Range
NW Corner	15	96 W	11 W
NE Corner	15	96 W	11 W