

2005-1694

DANIEL T. CRAWFORD, P.E. &amp; L.S. Crawford Engineering &amp; Surveying, Inc., Independence, Iowa 319/334-7077

## UNITED STATES PUBLIC LAND SURVEY CORNER CERTIFICATE

OF

Land Survey Monuments situated in Section 15, Township 96 N, Range 11 W, of the Fifth Principal Meridian, Chickasaw County, Iowa.

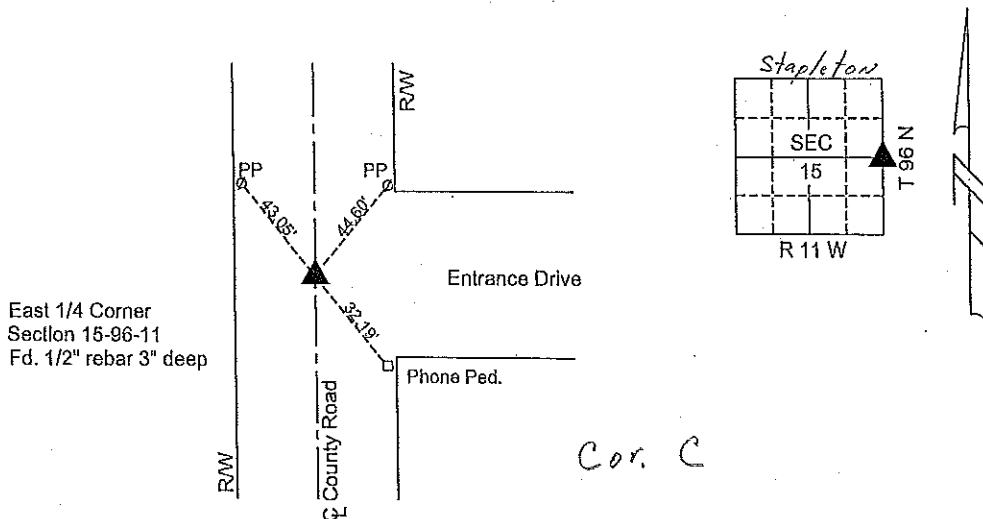
Previously recorded in N/A In County Recorder's Office.

## Monument Description and Remarks:

Reason for preparing certificate: Corner certificate for East 1/4 Corner of Section 15 is not on file.Evidence and detailed procedure used to establish corner position: Corner position established, see below.Monumentation found or placed: East 1/4 Corner - Sound 1/2" rebar 3" deep

## PLAN-VIEW

(Show a minimum of three reference ties to durable physical objects, relevant monuments and physical conditions that will enable recovery of the corner).



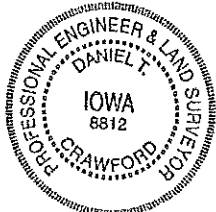
I hereby certify that the survey work was completed and this land surveying document was prepared by me or under my direct personal supervision and that I am a duly licensed land surveyor under the laws of the State of Iowa.

Signature: Daniel T. Crawford  
DANIEL T. CRAWFORD, P.E. & L.S.

Date: 8-10-05 Reg. No. 8812

My license renewal date is December 31, 2005

SEAL



Corners	List Corners to be Indexed		
	Section	Twp.	Range
East 1/4 Corner	15	96 W	11 W

DOCUMENT No. **00839** FILED FOR RECORD THE 17th DAY OF October, 19 96 AT 8:52 O'CLOCK A.M. BOOK 162 DEEDS PAGE 202

RECORDING FEE \$ 6.00 TRANSFER FEE \$         

STATE OF IOWA, CHICKASAW COUNTY, By LEITHA N. ROSS Recorder Deputy

Prepared by: Erdman Engineering P.C. 708 Commerce Drive, P.O. Box 246, Decorah Iowa, 52101  
Phone (319)382-4194, Fax (319)382-3623

## United States Public Land Survey Corner Certificate

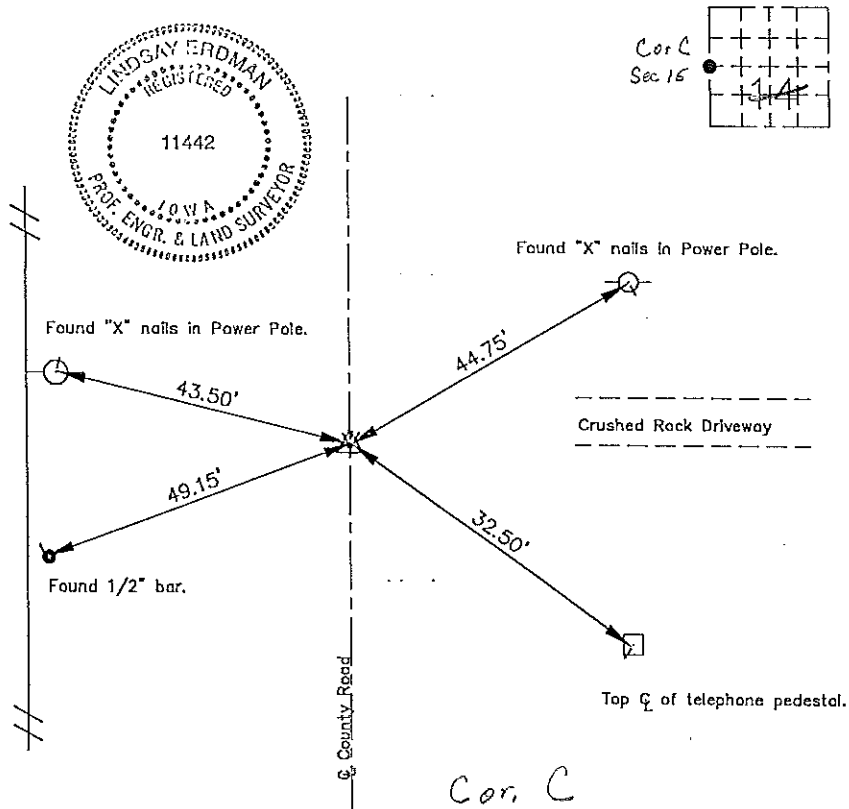
15 of

Land Survey Monuments situated in Section 14 Township 96 Range 11 of the Fifth Principle Meridian, Chickasaw County, Iowa. Previously recorded in Book 162 p. 58 in County Records Office.

(Show reason for preparing this certificate, the evidence and detailed procedures used in establishing the corner positions and monumentation found or placed.)

Monument Description and Remarks: This certificate is prepared in accordance with Section 355.11 of the 1995 Code of Iowa. No previous certificate has been filed for this corner location. Based on County Engineer's Reference Ties we found a 1" bar, two sets of "X" nails one 1/2" bar all used as tie markers. From these ties we found a 1/2" bar at the surface of the crushed rock surface at the W 1/4 corner of Sec. 14-96-11.

Plan-View  
(Show a minimum of three reference ties to durable physical objects, relevant monuments and physical conditions that will enable recovery of the corner.)



I hereby certify that the survey work was completed and this certificate was prepared by me or under my direct supervision and that I am a duly registered land surveyor under the laws of the State of Iowa.

Signature Lindsay Erdman  
Lindsay Erdman, P.E. and L.S.

Date 7/14/96 Reg. No. 11442

My license will be renewed January 1, 1997

Corners	Section	Twp.	Range
W 1/4	14	96	11