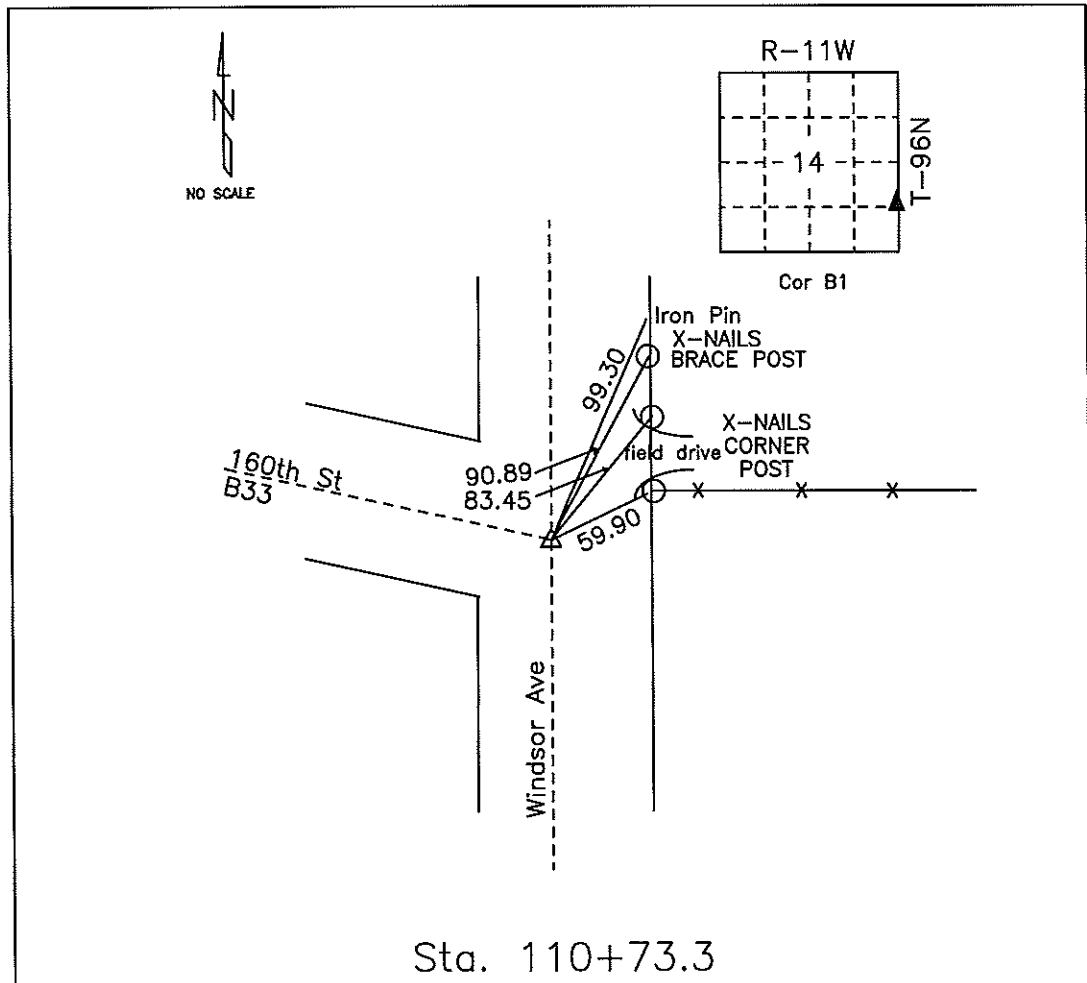


COUNTY ENGINEER'S SECTION CORNER PRESERVATION RECORD

LAND SURVEY MONUMENT LOCATED IN SECTION 14, TOWNSHIP 96 N
NORTH, RANGE 11 W, OF THE 5TH P.M. Chickasaw COUNTY, IOWA
PREVIOUSLY RECORDED COUNTY ENGINEER'S OFFICE



MONUMENT DESCRIPTION AND NARRATIVE End PK-Nail 06/11/09.

Construction point for plans LC-168-79-19, station 110+73.3. Referred to as Corner B1 in Chickasaw

County Engineer's Tie Book.

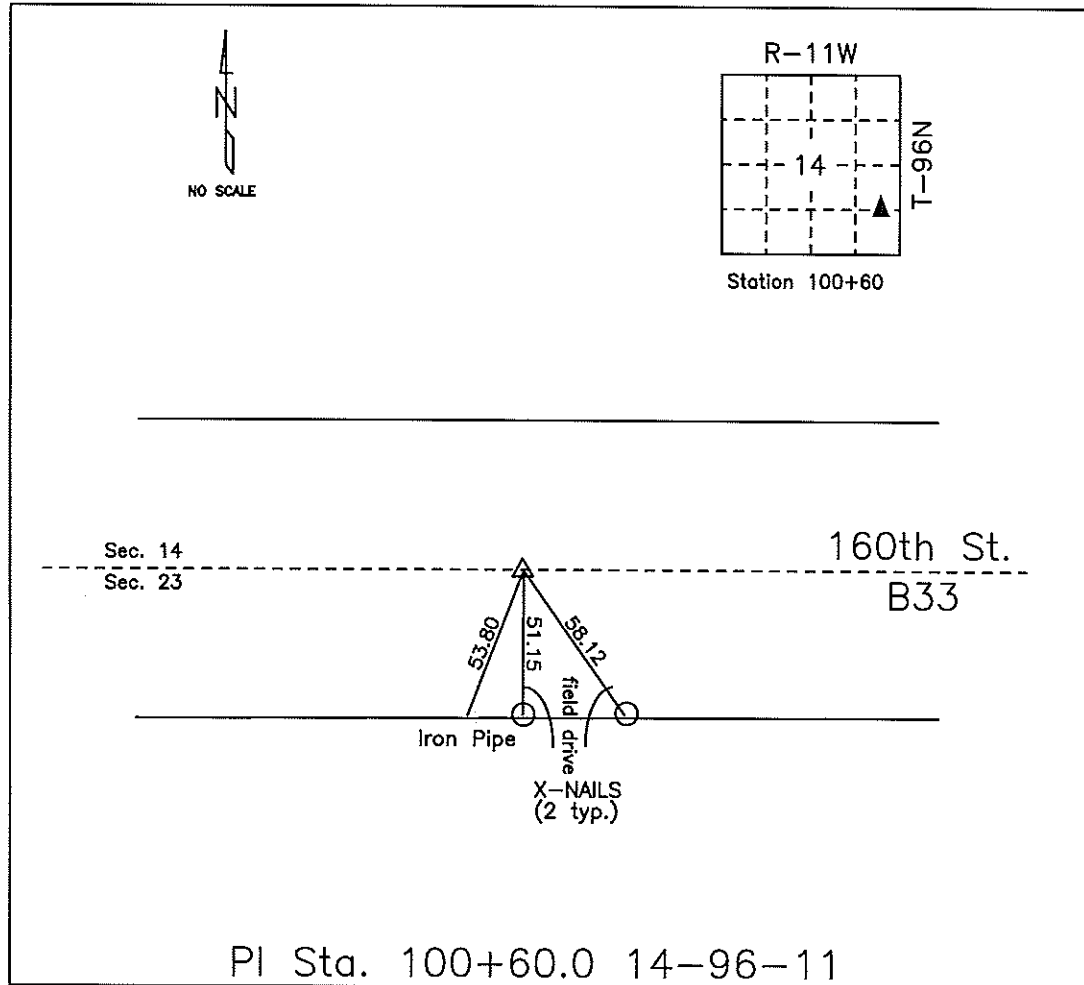
All ties are slope chained.

I AM NOT A REGISTERED LAND SURVEYOR UNDER THE LAWS OF THE STATE OF IOWA

JIM FOSTER CHICKASAW CO. DATE: 06/11/09

COUNTY ENGINEER'S SECTION CORNER PRESERVATION RECORD

LAND SURVEY MONUMENT LOCATED IN SECTION 14, TOWNSHIP 96 N
NORTH, RANGE 11 W, OF THE 5TH P.M. Chickasaw COUNTY, IOWA
PREVIOUSLY RECORDED COUNTY ENGINEER'S OFFICE



MONUMENT DESCRIPTION AND NARRATIVE End PK-Nail 06/11/09.

Previously recorded in plans LC-168-79-19 as station 100+60.

All ties are slope chained

I AM NOT A REGISTERED LAND SURVEYOR UNDER THE LAWS OF THE STATE OF IOWA

JIM FOSTER CHICKASAW CO. DATE: 06/11/09

UNITED STATES PUBLIC LAND SURVEY CORNER CERTIFICATE

OF

Land Survey Monuments situated in Section 14, Township 96N, Range 11W, of the Fifth Principal Meridian, Chickasaw County, Iowa. Previously recorded in does not apply in County Recorders Office.
(book, page, document number, etc.)

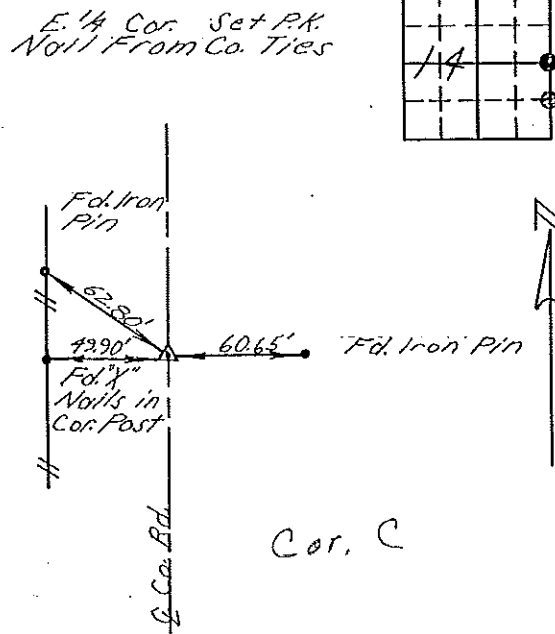
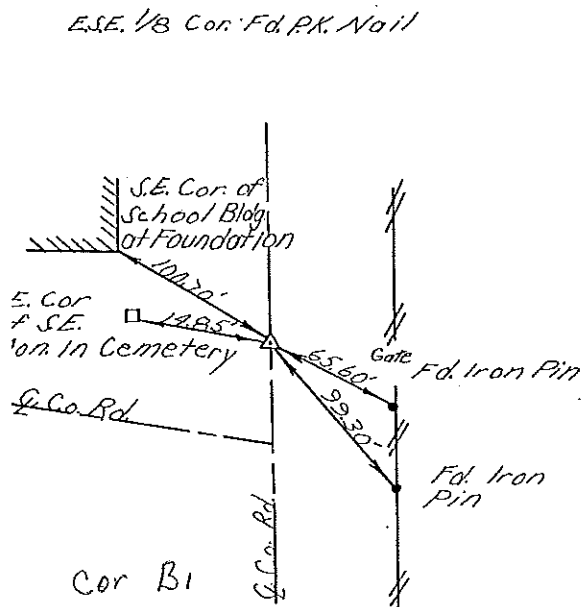
(Show reason for preparing this certificate, the evidence and detailed procedures used in establishing the corner positions and monumentation found or placed.)

Monument Description and Remarks:

E 1/4 Cor Set P.K. Nail from Co. Ties
E.S.E. 1/8 Cor. Fd. P.K. Nail

PLAN - VIEW

(Show a minimum of three reference ties to durable physical objects, relevant monuments and physical conditions that will enable recovery of the corner.)



I hereby certify that the survey work was completed and this certificate was prepared by me or under by direct personal supervision and that I am a duly registered land surveyor under the laws of the State of Iowa.

Signature: Lindsay Erdman
Lindsay Erdman, P.E. & L.S.

Date: 2-15-95 Reg. No. 11442

My license will be renewed January 1, 1997.

SEAL



Corners	Section	Twp.	Range.	
E. 1/4	14	96	11	C-44-96-11
E.S.E. 1/8	14	96	11	B1 14-96-11

Placed in 1/2 Sec 14-96-11 7/26/95