

Chickasaw Co. Recorder
Cindy Messersmith
Fee Book 2014-0218
02/13/2014 @ 04:03 PM
SEC COR CERT
Book: Page: # Pages: 1
Total Fees: \$7.00

Prepared by & Return to: Harold - Reicks Surveying, 10 East Main Street, New Hampton, IA 50658, Ph. 641-394-2725

UNITED STATES PUBLIC LAND SURVEY CORNER CERTIFICATE

Land Survey Monuments situated in Section 14, Township 96 North, Range 11 West of the Fifth Principal Meridian, Chickasaw County, Iowa. 1., 2.) Not previously recorded in the County Recorder's office.

This certificate is being prepared in compliance with Iowa Code Chapter 355.11 because:

- 1 & 2 ☒ There is no certificate on file for this corner.
☐ There are no longer three valid ties of record.
☐ There are changes to reference ties of record.
☐ There is change of monumentation of record.
☐ To clarify description of record monument (ties).

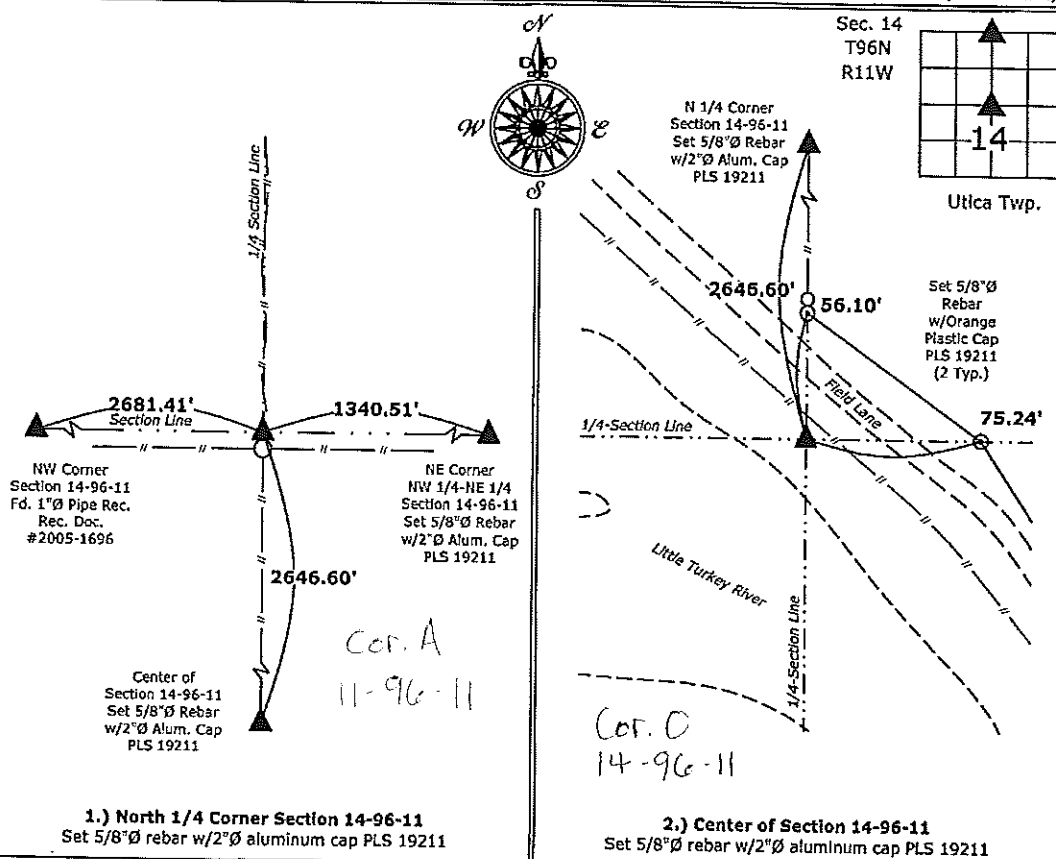
Monument Description and Remarks:

1.) North 1/4 Corner: Set 5/8"Ø rebar with 2"Ø aluminum cap PLS 19211 at 4 way possession line fence intersection after comparing the position to adjacent corners, the monument is 0.5' North of a steel corner post.

2.) Center of Section: Set 5/8"Ø rebar with 2"Ø aluminum cap PLS 19211 online between the East 1/4 corner and the West 1/4 corner and at record distance from the East 1/4 corner with information obtained from a Survey and Plat made by Lindsay Erdman, recorded September 17, 1996 in Book 162, Pages 74-75, on file in the County Recorder's office.

PLAN - VIEW

(Show a minimum of three reference ties to durable physical objects, relevant monuments and physical conditions that will enable recovery of the corner.)



I hereby certify that this land surveying document was prepared and the related survey work was performed by me or under my direct personal supervision and that I am a duly licensed Land Surveyor under the laws of the State of Iowa.

Kirk D. Reicks 2-13-14
Kirk D. Reicks Date:

License number 19211

My license renewal date is December 31, 2014.
Sheets covered by this seal: Individual sheet only

List Corners to be Indexed

Corners	Section	Twp.	Range
N 1/4	14	96	11
CTR	14	96	11

Project Number: 2014-016

FB: Chickasaw 5, Pgs. 76-77

File: S:\CAD Projects\County Control Systems\CHICKASAW\CHICK-16.dwg, 2/13/2014 3:37:18 PM