

FILED 2002-0455

RECORDER'S OFFICE
CHICKASAW COUNTY, IOWA

2002 FEB 19 PM 1 23

CINDY MEGGERSMITH
COUNTY RECORDERSection 14-96-11
As referred to in
Engr Tie Book

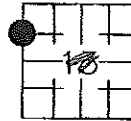
Prepared by: Erdman Engineering, P.C. 708 Commerce Drive, P.O. Box 246 Decorah, Iowa 52101,(563)382-4194

United States Public Land Survey Corner Certificate

of 14 96
Land Survey Monuments situated in Section 13, Township 97, Range 11 West of
the 5th Principal Meridian in Chickasaw County, Iowa. Previously recorded in
does not apply in the county Recorder's Office.

Monument Description and Remarks: This certificate is prepared in accordance with
Section 193C of the Code of Iowa. No previous certificate has been filed for this
corner location. We found no record of the WNW $\frac{1}{8}$ Corner being set. We found no
evidence of a monument in the field other than the centerline of the county road and
the existing fence lines running east and west. We found the W $\frac{1}{4}$ Corner and the NW
Corner. Based on these monuments we set a $\frac{1}{2}$ " diameter steel bar with yellow plastic
cap #11442 on line and midway between the NW Corner and the W $\frac{1}{4}$ Corner as the
WNW $\frac{1}{8}$ Corner. The monument falls at the approximate centerline of the county road
and in line with the fence lines running east and west.

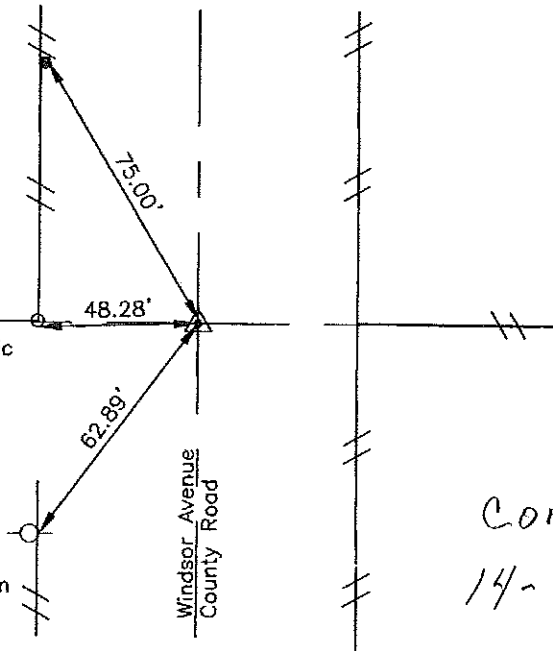
Plan-View



Set $\frac{1}{2}$ " diameter steel
bar in right-of-way
fence

Nail with orange plastic
cap #11442 on south
side of wood post

Nail with orange
plastic cap #11442 on
east side of power
pole



I hereby certify that the survey work was completed
and this certificate was prepared by me or under my
direct supervision and that I am a duly registered
land surveyor under the laws of the State of Iowa.

Signature

Lindsay Erdman, P.E. and L.S.

Date: 2/11/02

Reg. No. 11442

My license renewal date is December 31, 2002

Corner(s) to be Indexed

Corner	Section	Township	Range
WNW $\frac{1}{8}$	13	97	11