

DOCUMENT No. **01421** FILED FOR RECORD THE 26th DAY OF January, 1998 AT 8:30 O'CLOCK A.M. BOOK 166 DEEDS PAGE 316 STATE OF IOWA, CHICKASAW COUNTY, Lindsay M. Ross Recorder, LEITHA M. ROSS Deputy

Prepared by: Erdman Engineering P.C. 708 Commerce Drive, P.O. Box 246, Decorah Iowa, 52101
Phone (319)382-4194, Fax (319)382-3623

United States Public Land Survey Corner Certificate of

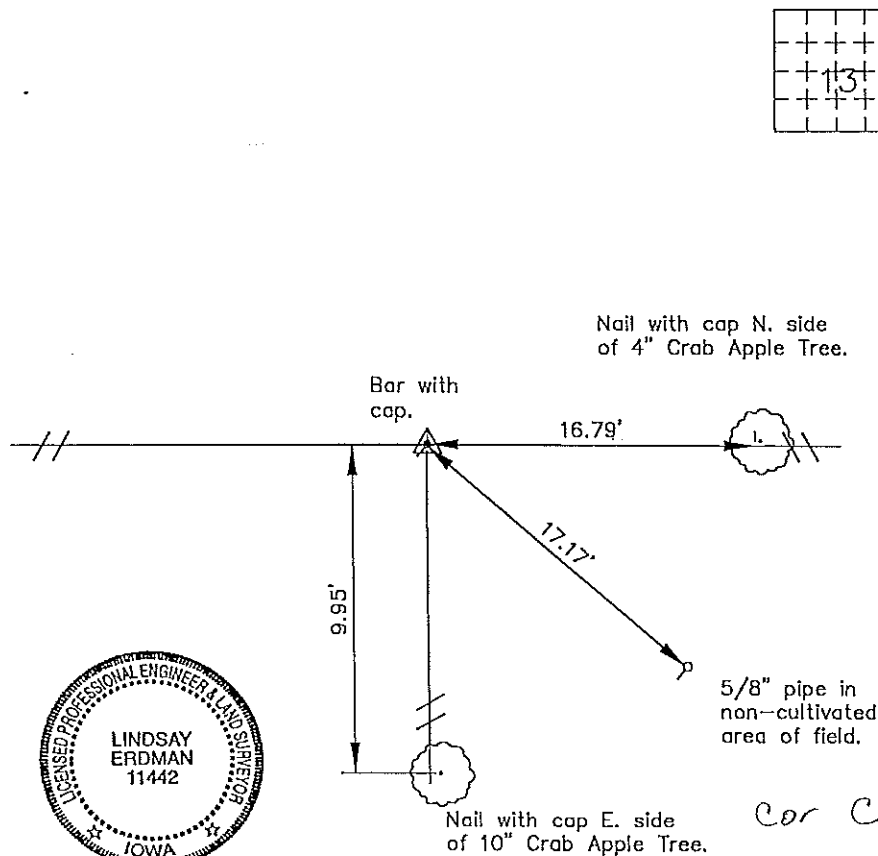
Land Survey Monuments situated in Section 13 Township 96 Range 11 of the Fifth Principle Meridian, Chickasaw County, Iowa. Previously recorded in does not apply in County Recorders Office.

(Show reason for preparing this certificate, the evidence and detailed procedures used in establishing the corner positions and monumentation found or placed.)

Monument Description and Remarks: This certificate is prepared in accordance with Section 355.11 of the 1995 Code of Iowa. No previous certificate has been filed for this corner location. No field evidence was found at the E 1/4 other than the existing three way fence corner. We set a 1/2" bar with cap RLS #11442 at the corner post of the three way fence intersection at the E 1/4 corner of section 13-96-11.

Plan-View

(Show a minimum of three reference ties to durable physical objects, relevant monuments and physical conditions that will enable recovery of the corner.)



I hereby certify that the survey work was completed and this certificate was prepared by me or under by direct supervision and that I am a duly registered land surveyor under the laws of the State of Iowa.

Signature Lindsay Erdman
Lindsay Erdman, P.E. and L.S.

Date: 1/21/98 Reg. No. 11442

My license renewal date is December 31, 1998

Corners	Section	Twp.	Range
E 1/4	13	96	11

m:\a\adit\vegale\sect10\1997\Chickasaw\97008\Postal 12-17-97