

UNITED STATES PUBLIC LAND SURVEY CORNER CERTIFICATE

OF

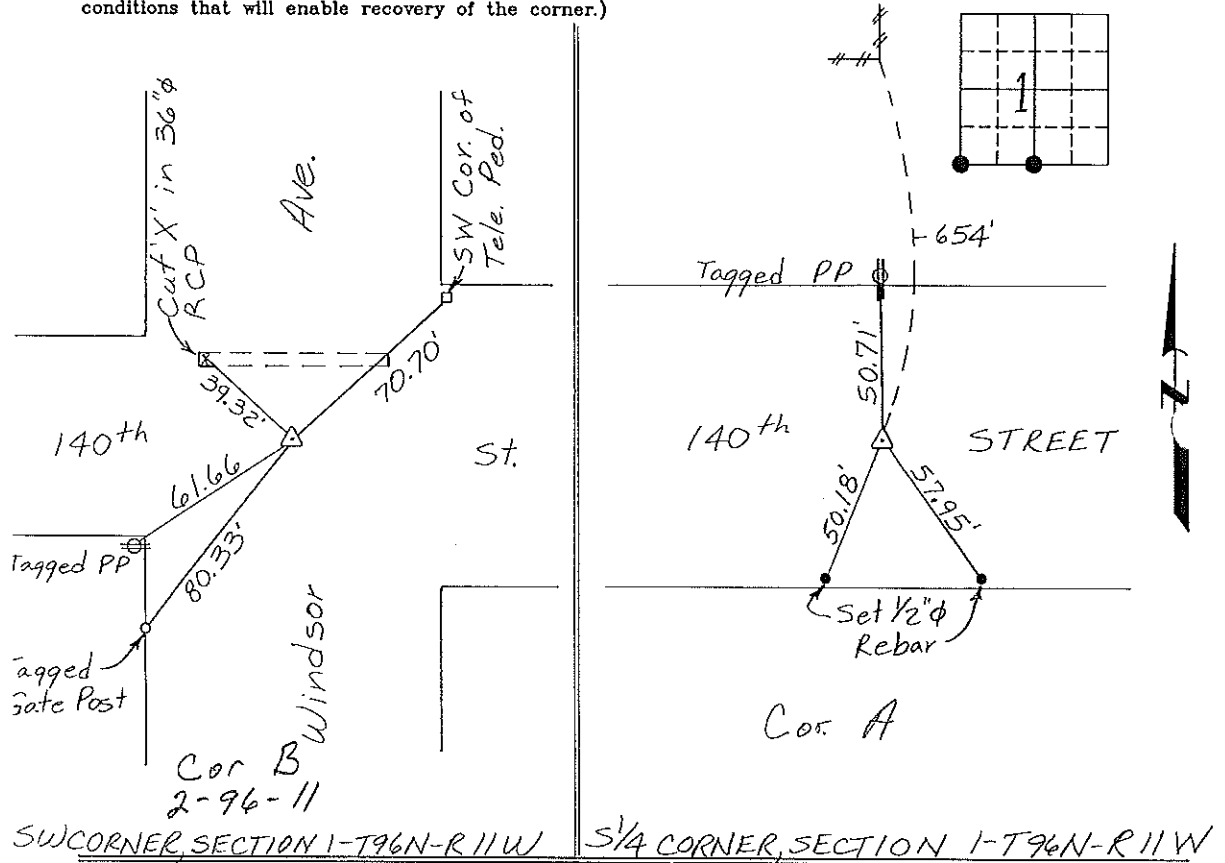
Land Survey Monuments situated in Section 1, Township 96 North, Range 11 West, of the Fifth Principal Meridian, CHICKASAW County, Iowa
Previously recorded in NONE in County Recorder's Office.
(book, page, document number, etc.)

(Show reason for preparing this certificate, the evidence and detailed procedures used in establishing the corner positions and monumentation found or placed.)

Monument Description and Remarks: SW CORNER, SECTION 1-T96N-R11W:
Found 5/8" Rebar.
S 1/4 CORNER, SECTION 1-T96N-R11W: Set 1/2" Rebar with cap from
County Engineer Ties & in line with 1/4 Section Line North.

PLAN - VIEW

(Show a minimum of three reference ties to durable physical objects, relevant monuments and physical conditions that will enable recovery of the corner.)



I hereby certify that the survey work was completed and this certificate was prepared by me or under my direct personal supervision and that I am a duly registered land surveyor under the laws of the state of Iowa.

Signature: Gary L. Casady

Gary L. Casady

Date: 1-19-95 Reg. No. 12532

My Registration Renewal Date is December 31, 1994

Seal



List Corners to be Indexed

Corners	Section	Twp.	Range
SW	1	96N	11W
Cor B	2-96-11		
S 1/4	1	96N	11W
Cor A	1-96-11		

*Placed in
Tie Book 3/13*

157-141

"County Engineer's Copy"