

Chickasaw Co. Recorder
Cindy Messersmith
Fee Book 2008-1034

05/29/2008 @0352PM
SCC SEC COR CERT
Book: Page: # Pages: 1
Total Fees: \$7.00

Herold - Reicks Surveying, 25 1/2 East Main Street, Suite 204, New Hampton, IA 50659, Ph. 641-994-2725

UNITED STATES PUBLIC LAND SURVEY CORNER CERTIFICATE

Land Survey Monuments situated in:

Section 3, Township 96 North, Range 11 West of the Fifth Principal Meridian,
Chickasaw County, Iowa. Previously recorded in none
in County Recorder's Office. (book, page, document number, etc.)

(Show reason for preparing this certificate, the evidence and detailed procedures used in establishing the corner positions and monumentation found or placed.)

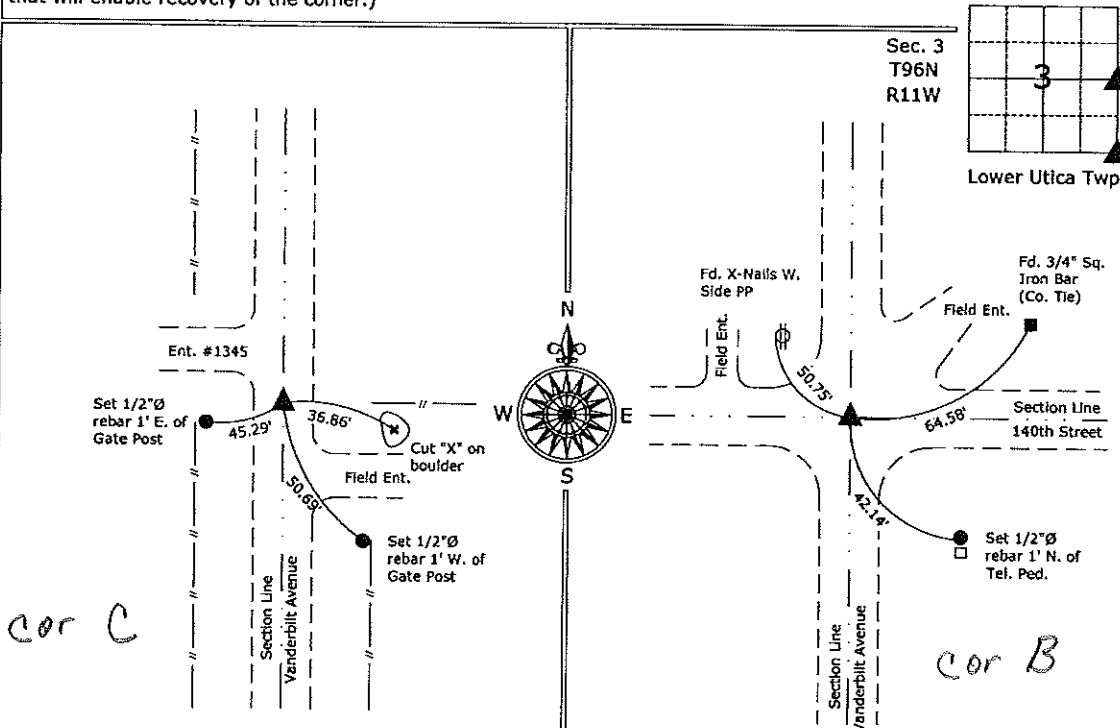
Monument Description and Remarks:

E 1/4 Corner Section 3-96-11: Fd. 1/2"Ø iron pin 24" Deep from information obtained from the County Engineer's office in Field Book " Lower Utica Twp." Section 3, Corner C. Set 5/8"Ø rebar w/2"Ø aluminum cap PLS 15525 over top.

SE Corner Section 3-96-11: Fd. 1/2" Sq. iron bar from information obtained from the County Engineer's office in Field Book " Lower Utica Twp." Section 3, Corner B.

PLAN - VIEW

(Show a minimum of three reference ties to durable physical objects, relevant monuments and physical conditions that will enable recovery of the corner.)



E 1/4 Corner Section 3-96-11: Fd. 1/2"Ø iron pin 24" Deep
Set 5/8"Ø rebar w/2"Ø aluminum cap PLS 15525 over top

SE Corner Section 3-96-11
Fd. 1/2" Sq. Iron bar



I hereby certify that this land surveying document was prepared and the related survey work was performed by me or under my direct personal supervision and that I am a duly licensed Land Surveyor under the laws of the State of Iowa.

Paul R. Herold 5-29-08
Paul R. Herold Date:

License number 15525
My license renewal date is December 31, 2008.
Sheets covered by this seal: Individual sheet only

List Corners to be Indexed			
Corners	Section	Twp.	Range
E 1/4	3	96	11
SE	3	96	11

Project Number: 2008-041

FB: Chickasaw County 1, Pgs. 67-69

File: S:\Projects\2008-041\dwg\2008-041.dwg, 5/30/2008 9:44:14 AM