

UNITED STATES PUBLIC LAND SURVEY CORNER CERTIFICATE

OF

Land Survey Monuments situated in Section 4, Township 95 North, Range 11 West of the Fifth Principal Meridian, CHICKASAW County, Iowa.
 Previously recorded in none in County Recorder's Office.
(book, page, document number, etc.)

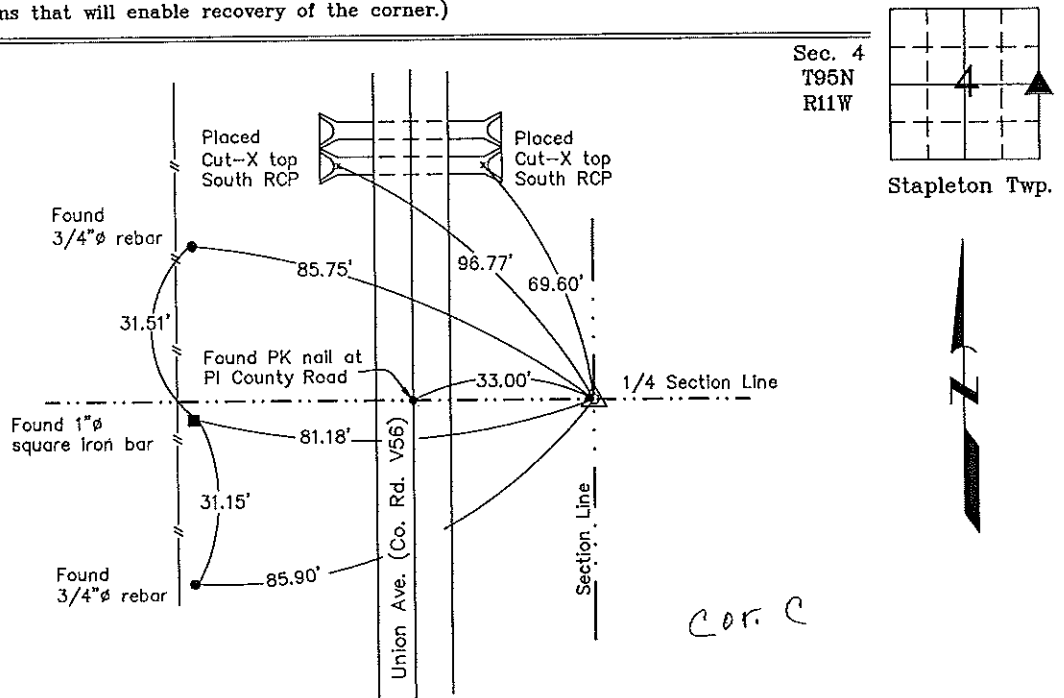
(Show reason for preparing this certificate, the evidence and detailed procedures used in establishing the corner positions and monumentation found or placed.)

Monument Description and Remarks: E 1/4 Corner Section 4 T95N R11W: Set 3/4"Ø x 3.0' rebar w/2"Ø aluminum cap LS 7060 at the location shown on the Iowa Department of Transportation R.O.W. strip map for Iowa Hwy. 24, Project number FA 357 C, dated 1939. The position of the original stone was shown as on the original East R.O.W. of the North/South County Road, 33.0 feet East of centerline and 490.8 feet North of the intersection of the former R.O.W. and the centerline tangent of Iowa Hwy. 24. This is also confirmed by the graphics of original ties on the Iowa DOT as-builts for Project 357(6), Sheet 10. The existing R.O.W. is now 50.0 feet left and right of the centerline and the position of the E 1/4 Corner falls in the side ditch.

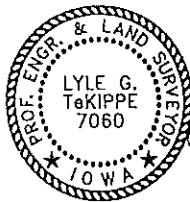
PLAN - VIEW

Project Number 00157.LS
 FB. 46H PG. 4-17

(Show a minimum of three reference ties to durable physical objects, relevant monuments and physical conditions that will enable recovery of the corner.)



E 1/4 Corner Section 4 T95N R11W
 Set 3/4"Ø rebar w/2"Ø aluminum cap LS 7060



I hereby certify that this land surveying document was prepared and the related survey work was performed by me or under my direct personal supervision and that I am a duly licensed Land Surveyor under the laws of the State of Iowa.

Lyle G. TeKippe 9-6-00
 Lyle G. TeKippe Date
 License number 7060
 My license renewal date is December 31, 2000.
 Sheets covered by this seal: Individual

List Corners to be Indexed			
Corners	Section	Twp.	Range
E 1/4	4	95	11
Cor C			

2000-1557

Engineer's Copy