

Prepared by & Return to: Kirk D. Reicks, HRS, LLC, 10 East Main Street, New Hampton, IA 50659, Phone 641-394-2725

United States Public Land Survey Corner Certificate

Land Survey Monument situated in
Section 24, Township 95 North, Range 12 West of the Fifth Principal Meridian, Chickasaw County, Iowa.
On file in Book 162, Page 276 in the County Recorder's Office.

This certificate is being prepared in compliance with Iowa Code Chapter 355.11 because:

There is no certificate on file for this corner.

There are no longer three valid ties of record.

There are changes to reference ties of record.

There is change of monumentation of record.

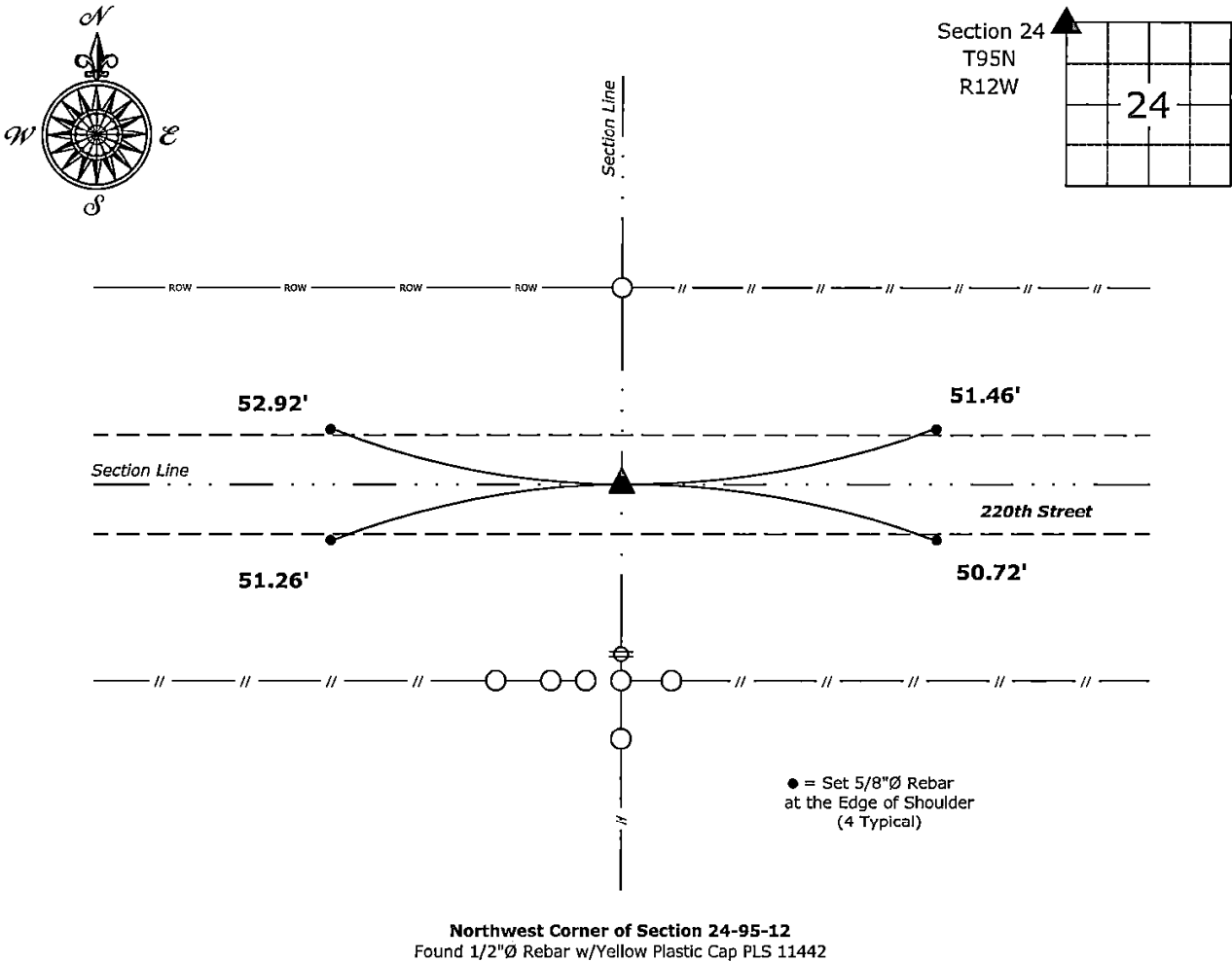
To clarify description of record monument (ties).

Monument Description and Remarks:

Northwest Corner: Found 1/2"Ø Rebar w/Yellow Plastic Cap PLS 11442 with information obtained from the previously recorded Section Corner Certificate.

Plan View - Not to Scale

(Show a minimum of three reference ties to durable physical objects, relevant monuments and physical conditions that will enable recovery of the corner.)



KIRK D. REICKS
19211

I hereby certify that this land surveying document was prepared and the related survey work was performed by me or under my direct personal supervision and that I am a duly licensed Land Surveyor under the laws of the State of Iowa.

7-23-2024

Kirk D. Reicks

Date:

License number 19211

My license renewal date is December 31, 2024.

Sheets covered by this seal: Individual sheet only

List Corner to be Indexed

Corner	Section	Township	Range
NW	24	95	12

Project Number: 2024-080

FB: Chickasaw 13, Page(s) 3-5

File: S:\ Projects - NHO\County Control Systems - NHO\CHICKASAW\CHICK-35 - 2024.dwg, 7/23/2024 7:43:43 AM