

**000001**

*Prepared by & Return to: Kirk D. Reicks, HRS, LLC, 10 East Main Street, New Hampton, IA 50659, Phone 641-394-2725*

# United States Public Land Survey Corner Certificate

Land Survey Monument situated in  
Section **36**, Township **97** North, Range **12** West of the Fifth Principal Meridian, **Chickasaw** County, Iowa.  
Not on file in the County Recorder's Office.

This certificate is being prepared in compliance with Iowa Code Chapter 355.11 because:

- ☒ There is no certificate on file for this corner.  
☐ There are no longer three valid ties of record.  
☐ There are changes to reference ties of record.  
☐ There is change of monumentation of record.  
☐ To clarify description of record monument (ties).

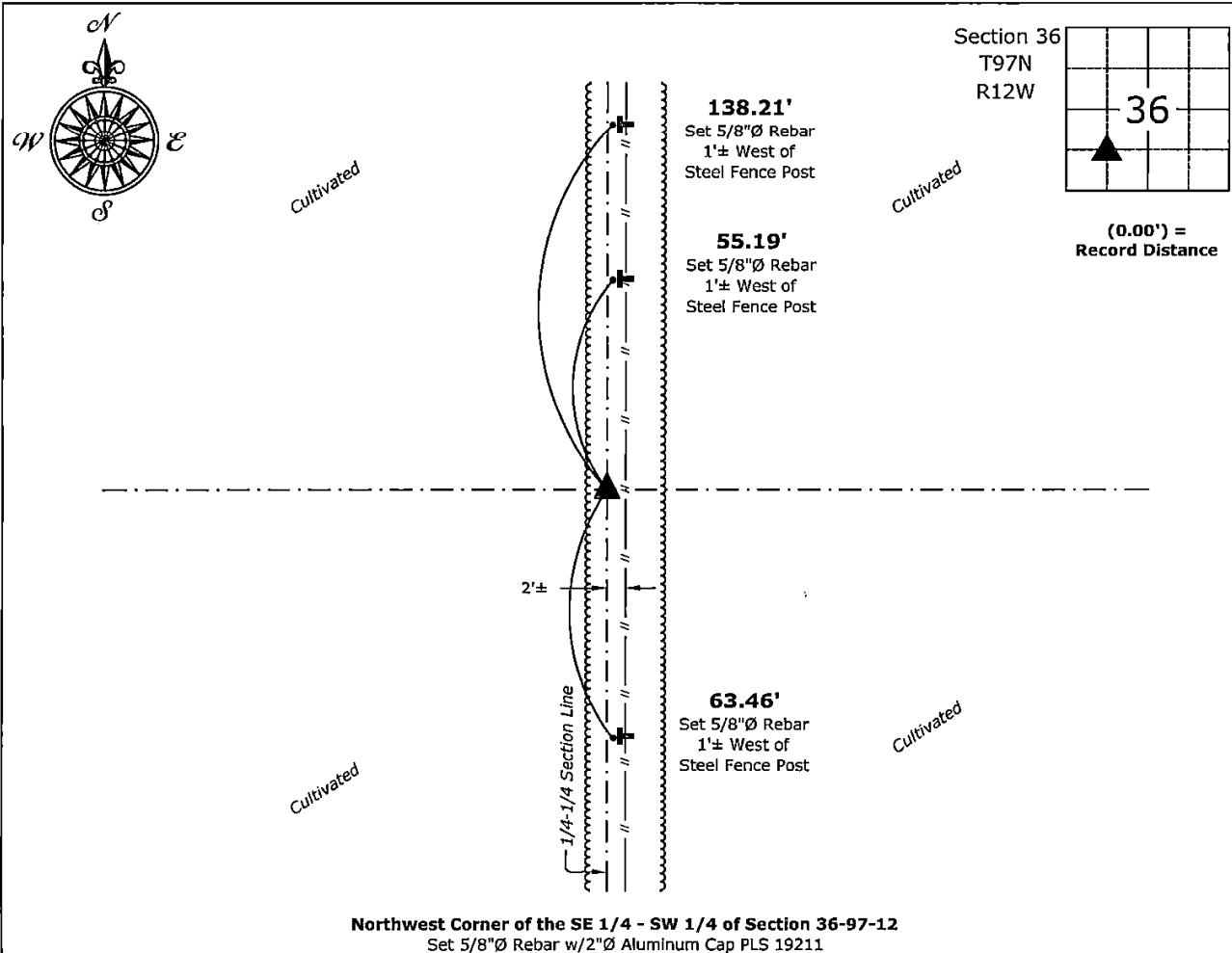
**Monument Description and Remarks:**

**Northwest Corner of the SE 1/4 - SW 1/4:**

Set 5/8"Ø Rebar w/2"Ø Aluminum Cap PLS 19211 at the intersection of 1/4-1/4 Section Lines.

### Plan View - Not to Scale

(Show a minimum of three reference ties to durable physical objects, relevant monuments and physical conditions that will enable recovery of the corner.)



I hereby certify that this land surveying document was prepared and the related survey work was performed by me or under my direct personal supervision and that I am a duly licensed Land Surveyor under the laws of the State of Iowa.

Kirk D. Reicks 5-5-2025  
Kirk D. Reicks Date:

License Number 19211

My license renewal date is December 31, 2026.

My license renewal date is December 31, 2020.  
 Sheets covered by this seal: Individual sheet only

List Corner to be Indexed

Corner	Section	Township	Range
NW-SE-SW	36	97	12

Project Number: 2025-043

FB: Chickasaw 13, Page(s) 44-46

File: S:\\_ Projects - NHO\County Control Systems - NHO\CHICKASAW\CHICK-7\CHICK-7 - 2025.dwg, 5/5/2025 3:23:10 PM