

SHIMAK SURVEYING, P.L.L.C., 3212 335th Street, Cresco, Iowa 52136 Phone (563) 379-8899

UNITED STATES PUBLIC LAND SURVEY CORNER CERTIFICATE
OF

Land Survey Monuments situated in Section 24 , Township 97 North, Range 12 West of the Fifth Principal Meridian, Chickasaw County, Iowa.
Previously recorded in None in County Recorder's Office.
(book, page, document number, etc.)

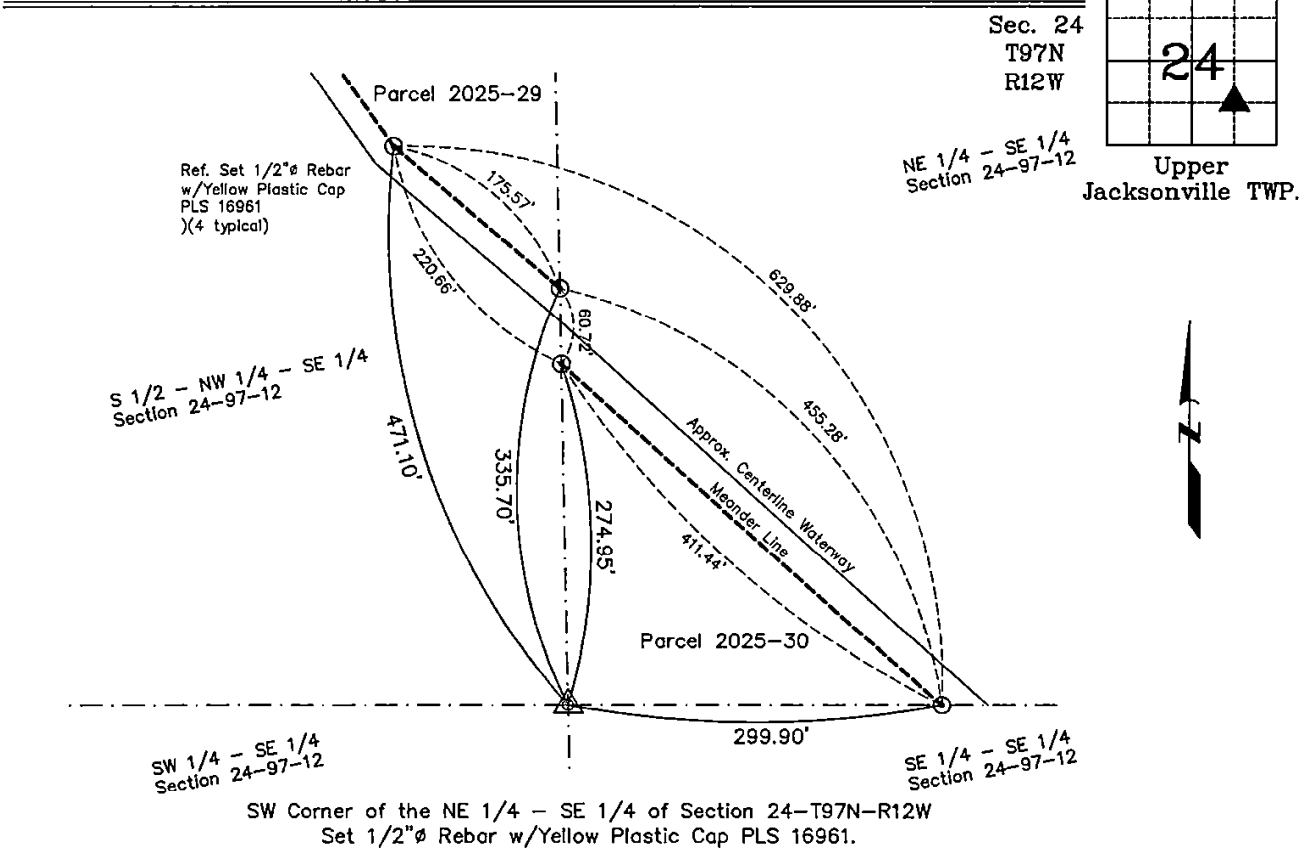
(Show reason for preparing this certificate, the evidence and detailed procedures used in establishing the corner positions and monumentation found or placed.)

Monument Description and Remarks: **SW Corner NE 1/4-SE 1/4 of Section 24-T97N-R12W:**
Set 1/2"Ø Rebar w/Yellow Plastic Cap PLS 16961 at the Cross of the 1/4-1/4 Section Lines

Ties were Placed as Shown Below.

PLAN - VIEW

(Show a minimum of three reference ties to durable physical objects, relevant monuments and physical conditions that will enable recovery of the corner.)



	I hereby certify that this land surveying document was prepared and the related survey work was performed by me or under my direct personal supervision and that I am a duly licensed Land Surveyor under the laws of the State of Iowa. <i>Michael J. Shimak</i> 7-2-2025 Michael J. Shimak Date: License number 16961 My license renewal date is December 31, 2025. Sheets covered by this seal: Sheet P1	List Corners to be Indexed			
		Corners	Section	Twp.	Range
		SW Corner	24	97N	12W
		NE 1/4 - SW 1/4	24	97N	12W
		Project Number: 26-18-26.1S FB, Chickasaw No. 1, Pg. 41			