

SHIMAK SURVEYING, P.L.L.C., 3212 335th Street, Cresco, Iowa 52136 Phone (563) 379-8899

UNITED STATES PUBLIC LAND SURVEY CORNER CERTIFICATE

OF

Land Survey Monuments situated in Section 13 , Township 97 North, Range 12 West of the Fifth Principal Meridian, Howard County, Iowa.
Previously recorded in Bk. 2013, Pg. 509 in County Recorder's Office.
(book, page, document number, etc.)

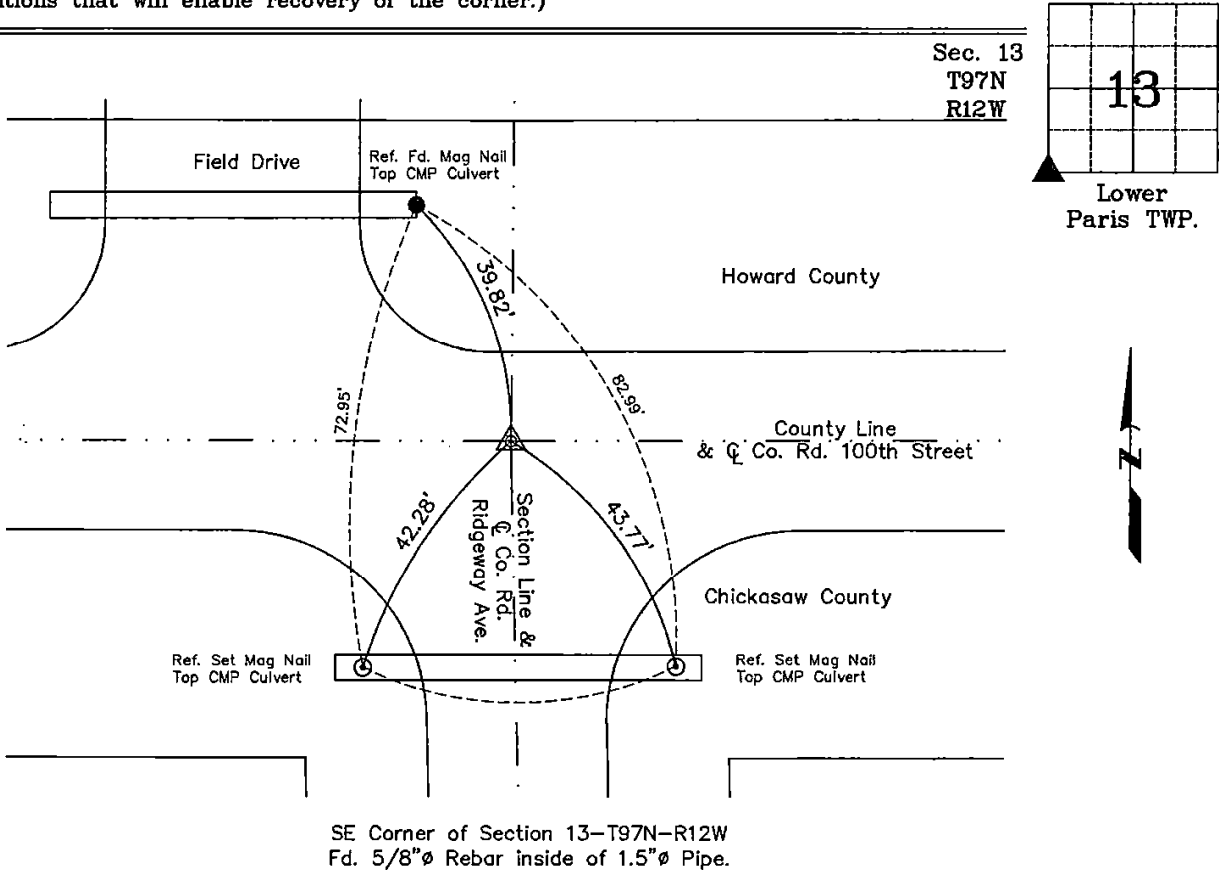
(Show reason for preparing this certificate, the evidence and detailed procedures used in establishing the corner positions and monumentation found or placed.)

Monument Description and Remarks: **SE Corner of Section 13-T97N-R12W:**
Fd. 5/8"Ø Rebar inside 1.5"Ø Pipe. Culvert Pipe for Ridgeway Avenue was Replaced.

Two Ties were Missing, Set Ties were Placed as Shown Below.

PLAN - VIEW

(Show a minimum of three reference ties to durable physical objects, relevant monuments and physical conditions that will enable recovery of the corner.)



I hereby certify that this land surveying document was prepared and the related survey work was performed by me or under my direct personal supervision and that I am a duly licensed Land Surveyor under the laws of the State of Iowa.

Michael J. Shimak 7-2-2025
Michael J. Shimak Date:
License number 16961
My license renewal date is December 31, 2025.
Sheets covered by this seal: Sheet P1

List Corners to be Indexed			
Corners	Section	Twp.	Range
SE Corner	13	97N	12W

Project Number: 26-19-25.1S
FB. Chickasaw No. 1, Pg. 41