

UNITED STATES PUBLIC LAND SURVEY CORNER CERTIFICATE

OF

Land Survey Monuments situated in Section 26, Township 96 North, Range 12 West, of the Fifth Principal Meridian, Chickasaw County, Iowa. Previously recorded in N/A in County Recorder's Office.

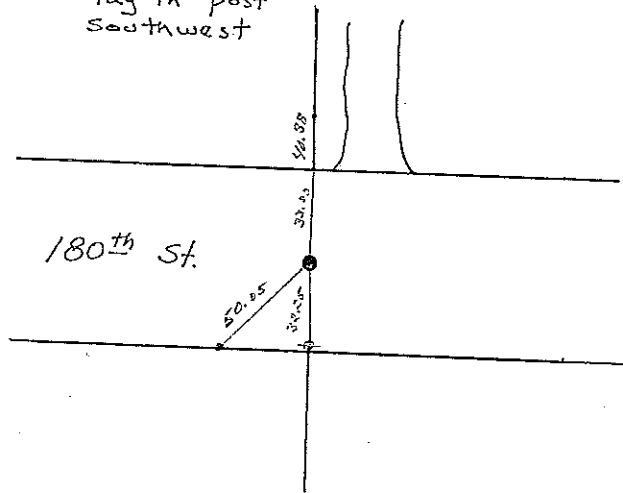
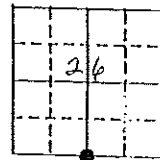
(book, page, document number, etc.)
 (Show reason for preparing this certificate, the evidence and detailed procedures used in establishing the corner positions and monumentation found or placed.)

Monument Description and Remarks: Found square iron pin in center of 180th St on fence line to north and to south

PLAN - VIEW

(Show a minimum of three reference lies to durable physical objects, relevant monuments and physical conditions that will enable recovery of the corner.)

- 33.70' to top steel post north
- 40.38' north to iron pin
- 32.25' to tag in power pole south
- 50.05' to tag in post southwest



South 1/4 cor
 Cor. A

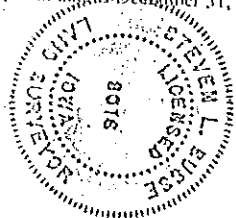
I hereby certify that the survey work was completed and this land surveying document was prepared by me or under my direct personal supervision and that I am a duly registered land surveyor under the laws of the state of Iowa

Signature: Steve Busse
 Name typed or printed: STEVE BUSSE

Date: 4/24/98 Reg. No. 9018

My registration renewal date is December 31, 1998

SEAL



Corners	List Corners to be Indexed Section	Twp	Range
S 1/4 COR.	26	96	12