

[illegible]

# United States Public Land Survey Corner Certificate

Land Survey Monument situated in  
Section **16**, Township **96** North, Range **12** West of the Fifth Principal Meridian, **Chickasaw** County, Iowa.  
Not on file in the County Recorder's Office.

**This certificate is being prepared in compliance with Iowa Code Chapter 355.11 because:**

- ☒ There is no certificate on file for this corner.  
☐ There are no longer three valid ties of record.  
☐ There are changes to reference ties of record.  
☐ There is change of monumentation of record.  
☐ To clarify description of record monument (ties).

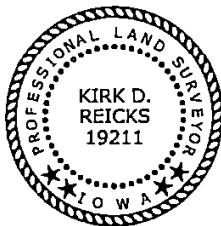
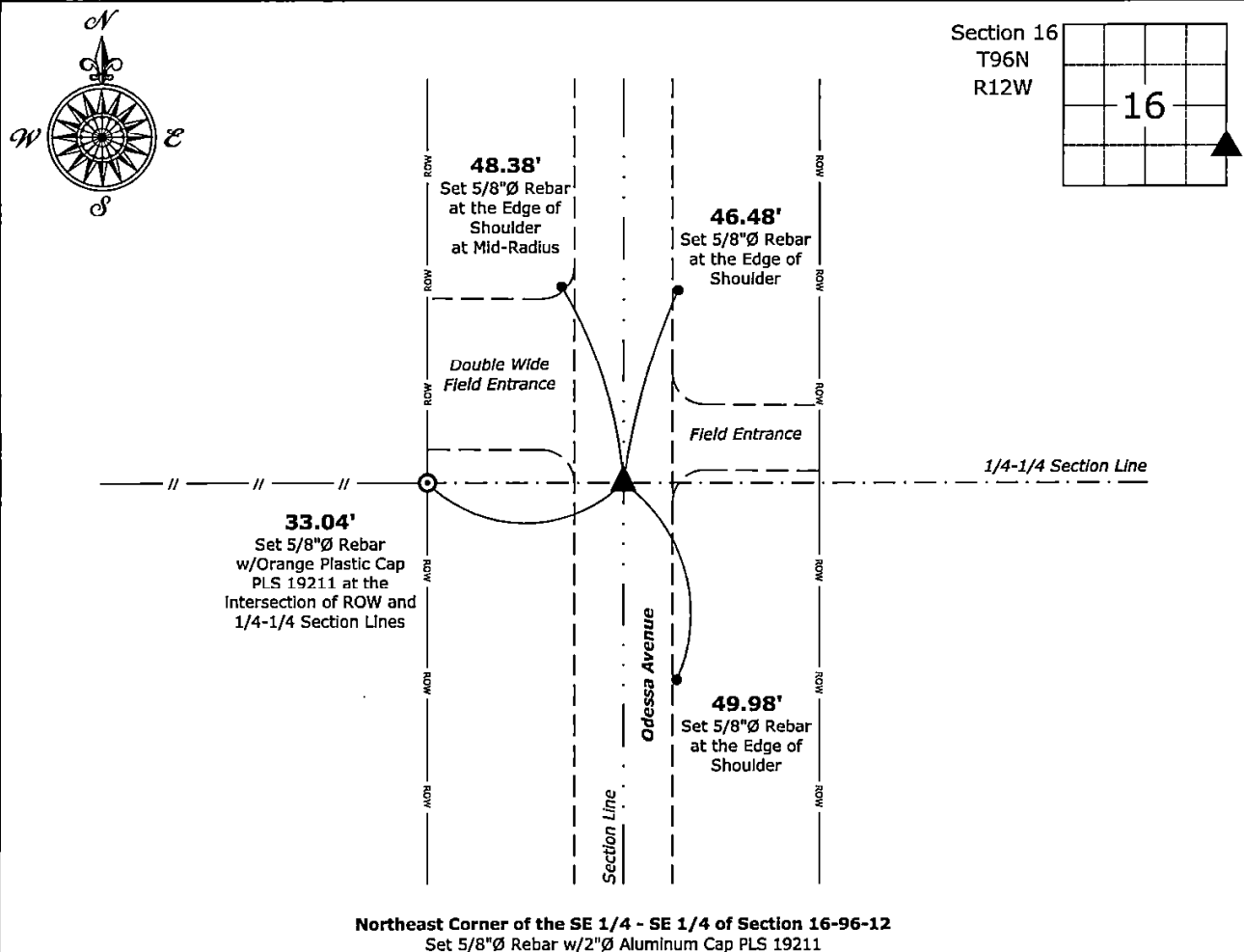
**Monument Description and Remarks:**

**Northeast Corner of the SE 1/4 - SE 1/4:**

Set 5/8"Ø Rebar w/2"Ø Aluminum Cap PLS 19211 equidistant and on line between the East 1/4 and Southeast Corners of said Section.

### Plan View - Not to Scale

(Show a minimum of three reference ties to durable physical objects, relevant monuments and physical conditions that will enable recovery of the corner.)



I hereby certify that this land surveying document was prepared and the related survey work was performed by me or under my direct personal supervision and that I am a duly licensed Land Surveyor under the laws of the State of Iowa.

Kirk D. Reicks 12-20-2024  
Kirk D. Reicks Date:

License number 19211  
My license renewal date is December 31, 2026.  
Sheets covered by this seal: Individual sheet only

## List Corner to be Indexed

Corner	Section	Township	Range
NE-SE-SE	16	96	12

Project Number: 2024-146

FB: Chickasaw 13, Page(s) 26-28