

000001

United States Public Land Survey Corner Certificate

Land Survey Monument situated in
Section **16**, Township **96** North, Range **12** West of the Fifth Principal Meridian, **Chickasaw** County, Iowa.
Not on file in the County Recorder's Office.

This certificate is being prepared in compliance with Iowa Code Chapter 355.11 because:

- ☒ There is no certificate on file for this corner.
☐ There are no longer three valid ties of record.
☐ There are changes to reference ties of record.
☐ There is change of monumentation of record.
☐ To clarify description of record monument (ties).

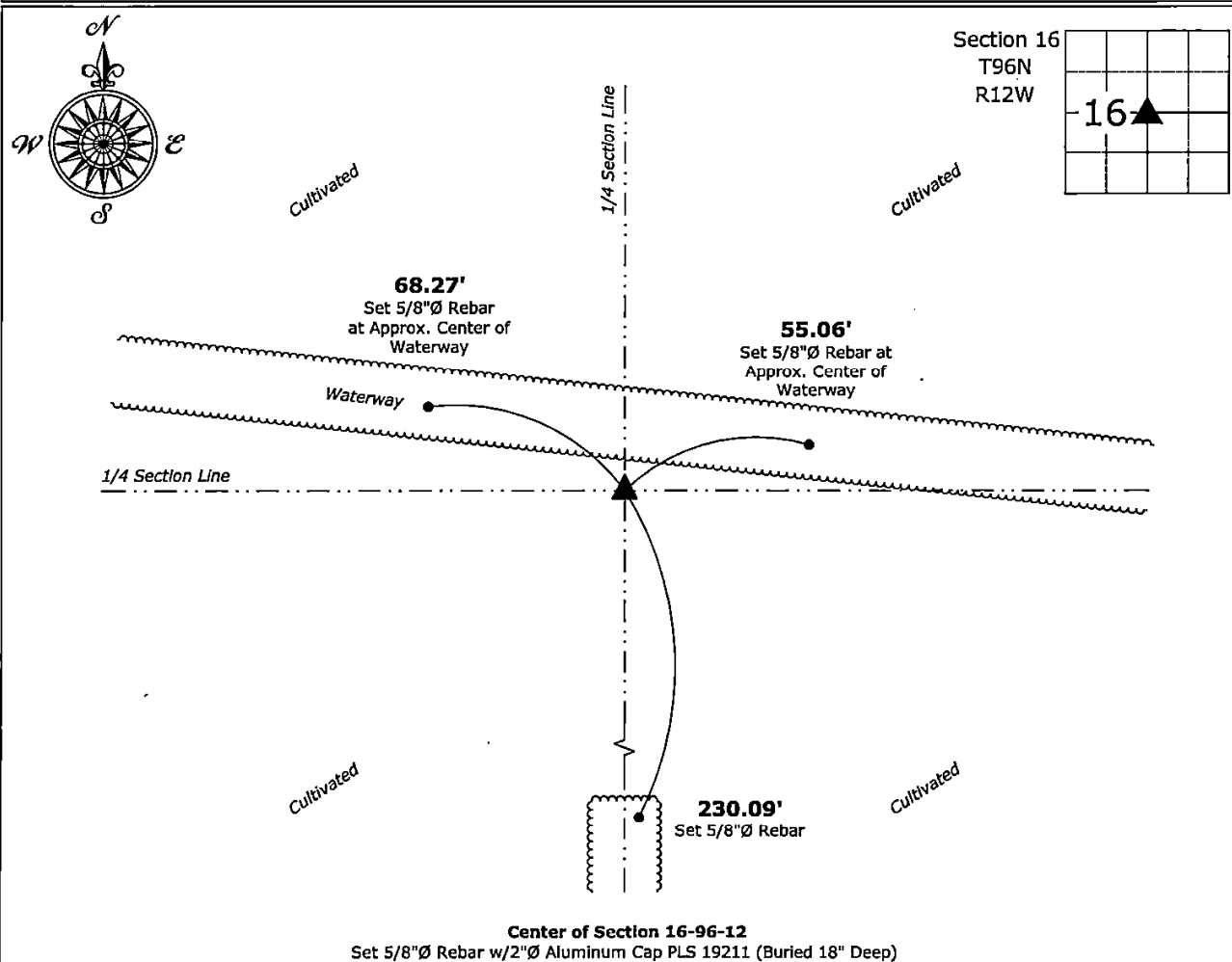
Monument Description and Remarks:

Center of Section:

Previous Monument was as a Steel Corner Post as indicated on a Survey and Plat, as recorded in Book 140, Page 20, on file in the Chickasaw County Recorder's Office. Set 5/8"Ø Rebar w/2"Ø Aluminum Cap PLS 19211 a record distances from Adjacent Corners. (Buried 18" Deep). The Area was recently cleared and the fence post was removed.

Plan View - Not to Scale

(Show a minimum of three reference ties to durable physical objects, relevant monuments and physical conditions that will enable recovery of the corner.)



I hereby certify that this land surveying document was prepared and the related survey work was performed by me or under my direct personal supervision and that I am a duly licensed Land Surveyor under the laws of the State of Iowa.

Kurt D. Thiel 12-20-2024

Kirk D. Reicks

Date:

License number 19211

My license renewal date is December 31, 2026.

Sheets covered by this seal: Individual sheet only

List Corner to be Indexed

Corner	Section	Township	Range
CTR	16	96	12

Project Number: 2024-146

FB: Chickasaw 13, Page(s) 26-28

File: S:_ Projects - NHO\County Control Systems - NHO\CHICKASAW\CHICK-13 - 2024.dwg, 12/20/2024 11:18:50 AM