



United States Public Land Survey Corner Certificate

Land Survey Monument situated in
Section **16**, Township **96** North, Range **12** West of the Fifth Principal Meridian, **Chickasaw** County, Iowa.
Not on file in the County Recorder's Office.

This certificate is being prepared in compliance with Iowa Code Chapter 355.11 because:

- ☒ There is no certificate on file for this corner.
☐ There are no longer three valid ties of record.
☐ There are changes to reference ties of record.
☐ There is change of monumentation of record.
☐ To clarify description of record monument (ties).

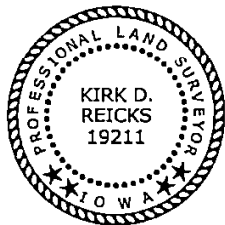
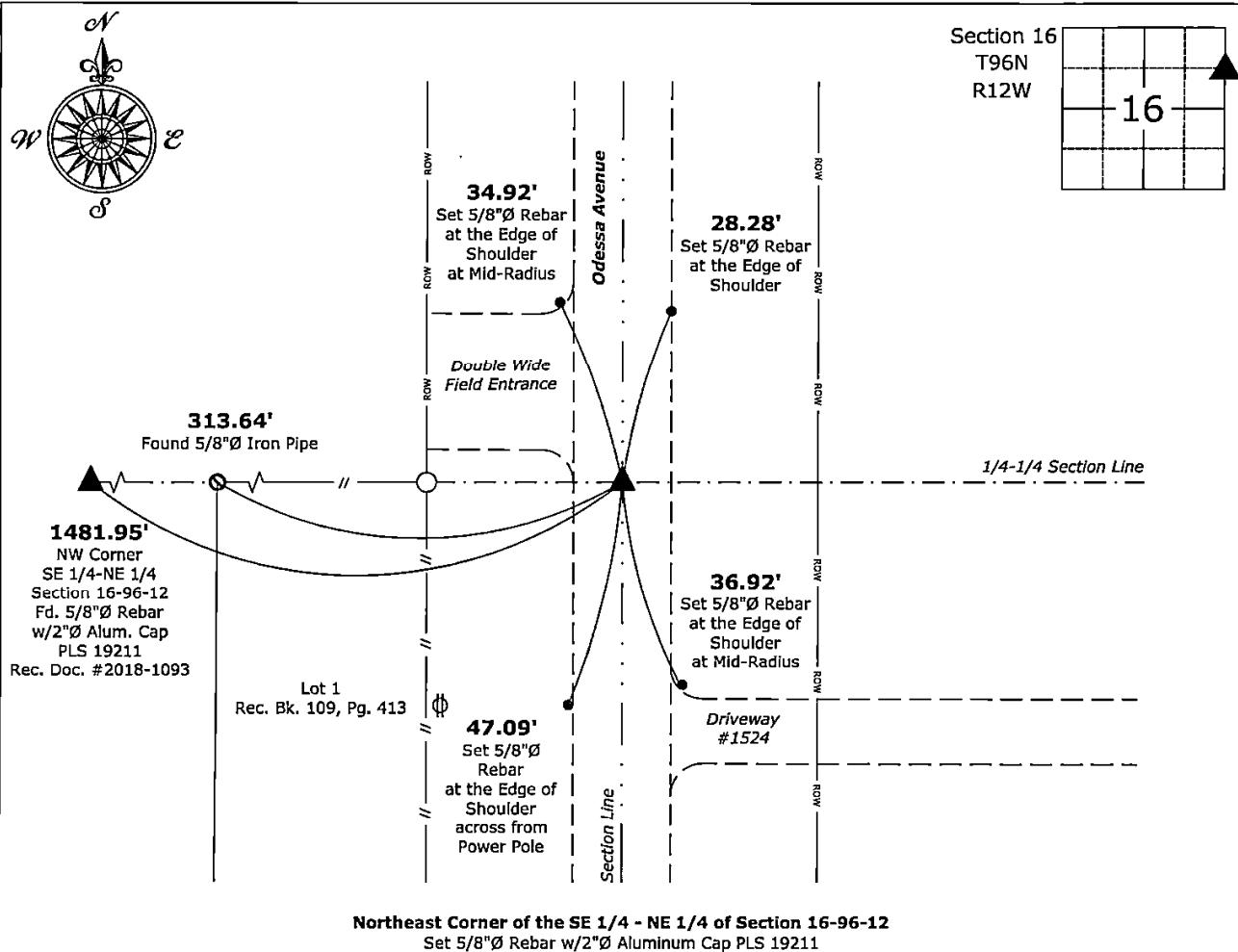
Monument Description and Remarks:

Northeast Corner of the SE 1/4 - NE 1/4:

Set 5/8"Ø Rebar w/2"Ø Aluminum Cap PLS 19211 on line between the East 1/4 and Northeast Corners of said Section and at the Extension of the 1/4-1/4 Section Line from the Northwest Corner of the SE 1/4 - NE 1/4 to and across a Found 5/8"Ø Pipe at the NW Corner of Lot 1 in the SE 1/4 - NE 1/4, as recorded in Book 109, Page 413, on file in the Chickasaw County Recorder's Office.

Plan View - Not to Scale

(Show a minimum of three reference ties to durable physical objects, relevant monuments and physical conditions that will enable recovery of the corner.)



I hereby certify that this land surveying document was prepared and the related survey work was performed by me or under my direct personal supervision and that I am a duly licensed Land Surveyor under the laws of the State of Iowa.

Kirk D. Reicks 12-20-2024
Kirk D. Reicks Date:

License number 19211
My license renewal date is December 31, 2026.
Sheets covered by this seal: Individual sheet only

List Corner to be Indexed

Corner	Section	Township	Range
NE-SE-NE	16	96	12

Project Number: 2024-146

FB: Chickasaw 13, Page(s) 26-28

File: S:_ Projects - NHO\County Control Systems - NHO\CHICKASAW\CHICK-13 - 2024.dwg, 12/20/2024 11:09:17 AM