

**000000**

# United States Public Land Survey Corner Certificate

Land Survey Monument situated in  
Section **25**, Township **94** North, Range **12** West of the Fifth Principal Meridian, **Chickasaw** County, Iowa.  
Not on file in the County Recorder's Office.

**This certificate is being prepared in compliance with Iowa Code Chapter 355.11 because:**

- ☒ There is no certificate on file for this corner.  
☐ There are no longer three valid ties of record.  
☐ There are changes to reference ties of record.  
☐ There is change of monumentation of record.  
☐ To clarify description of record monument (ties).

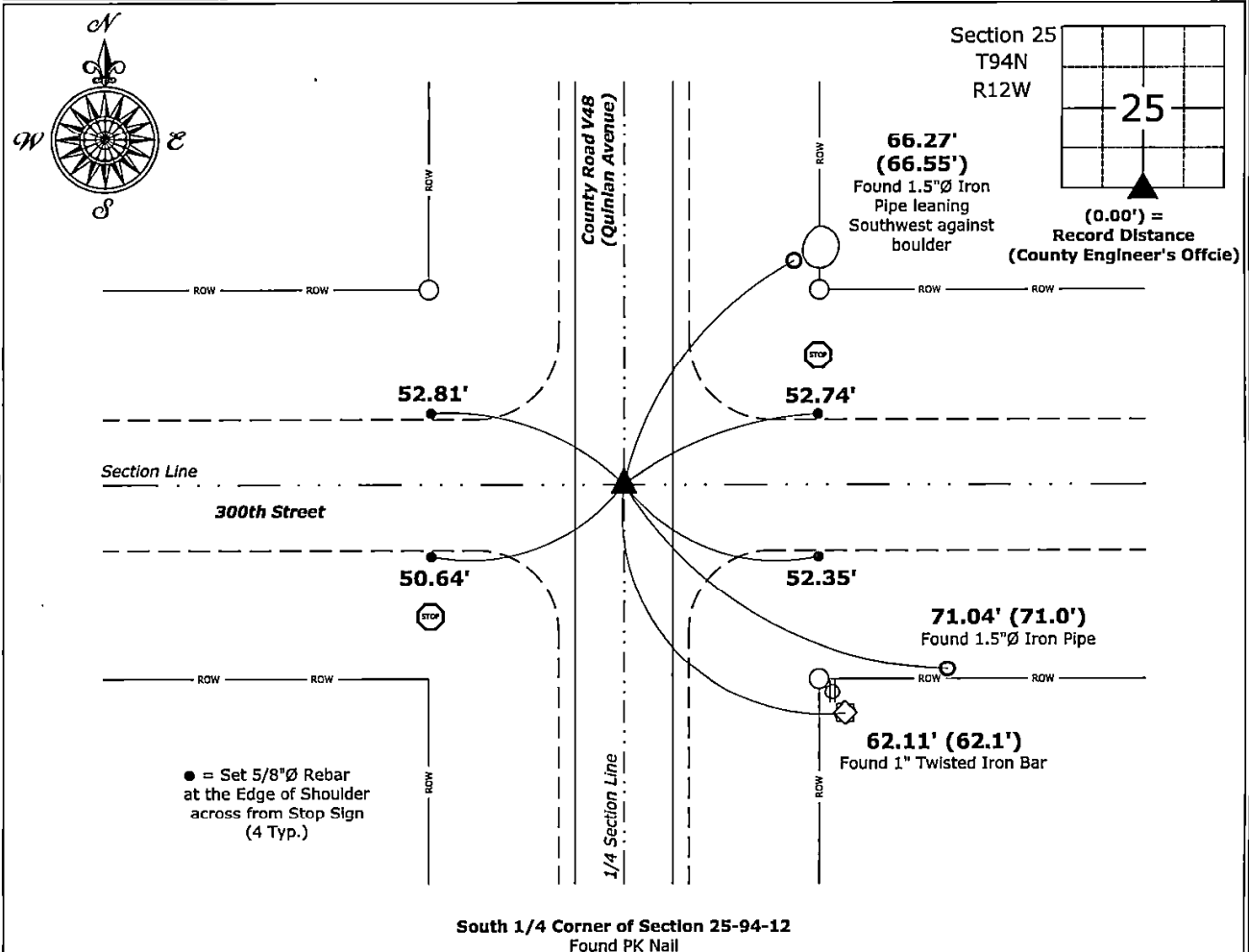
**Monument Description and Remarks:**

**South 1/4 Corner:**

Found PK Nail with information obtained from the County Engineer's Office, in Field Book Dresden Township Ties to Corners, Section 25, Corner A.

### Plan View - Not to Scale

(Show a minimum of three reference ties to durable physical objects, relevant monuments and physical conditions that will enable recovery of the corner.)



I hereby certify that this land surveying document was prepared and the related survey work was performed by me or under my direct personal supervision and that I am a duly licensed Land Surveyor under the laws of the State of Iowa.

*Karl D. Reed* 8-15-2024

Kirk D. Reicks

Date:

License number 19211

My license renewal date is December 31, 2024.

My license renewal date is December 31, 2021.  
Sheets covered by this seal: Individual sheet only

## List Corner to be Indexed

Corner	Section	Township	Range
S 1/4	25	94	12

Project Number: 2024-094

FB: Chickasaw 13, Page(s) 9-10

File: S:\ Projects - NHO\County Control Systems - NHO\CHICKASAW\CHICK-50 - 2024.dwg, 8/15/2024 6:57:26 AM