

Prepared by & Return to: Kirk D. Reicks, HRS, LLC, 10 East Main Street, New Hampton, IA 50659, Phone 641-394-2725

United States Public Land Survey Corner Certificate

Land Survey Monument situated in
Section 12, Township 94 North, Range 12 West of the Fifth Principal Meridian, Chickasaw County, Iowa.
On file in Book 148, Page 354 in the County Recorder's Office.

This certificate is being prepared in compliance with Iowa Code Chapter 355.11 because:

- ☐ There is no certificate on file for this corner.
☒ There are no longer three valid ties of record.
☒ There are changes to reference ties of record.
☒ There is change of monumentation of record.
☐ To clarify description of record monument (ties).

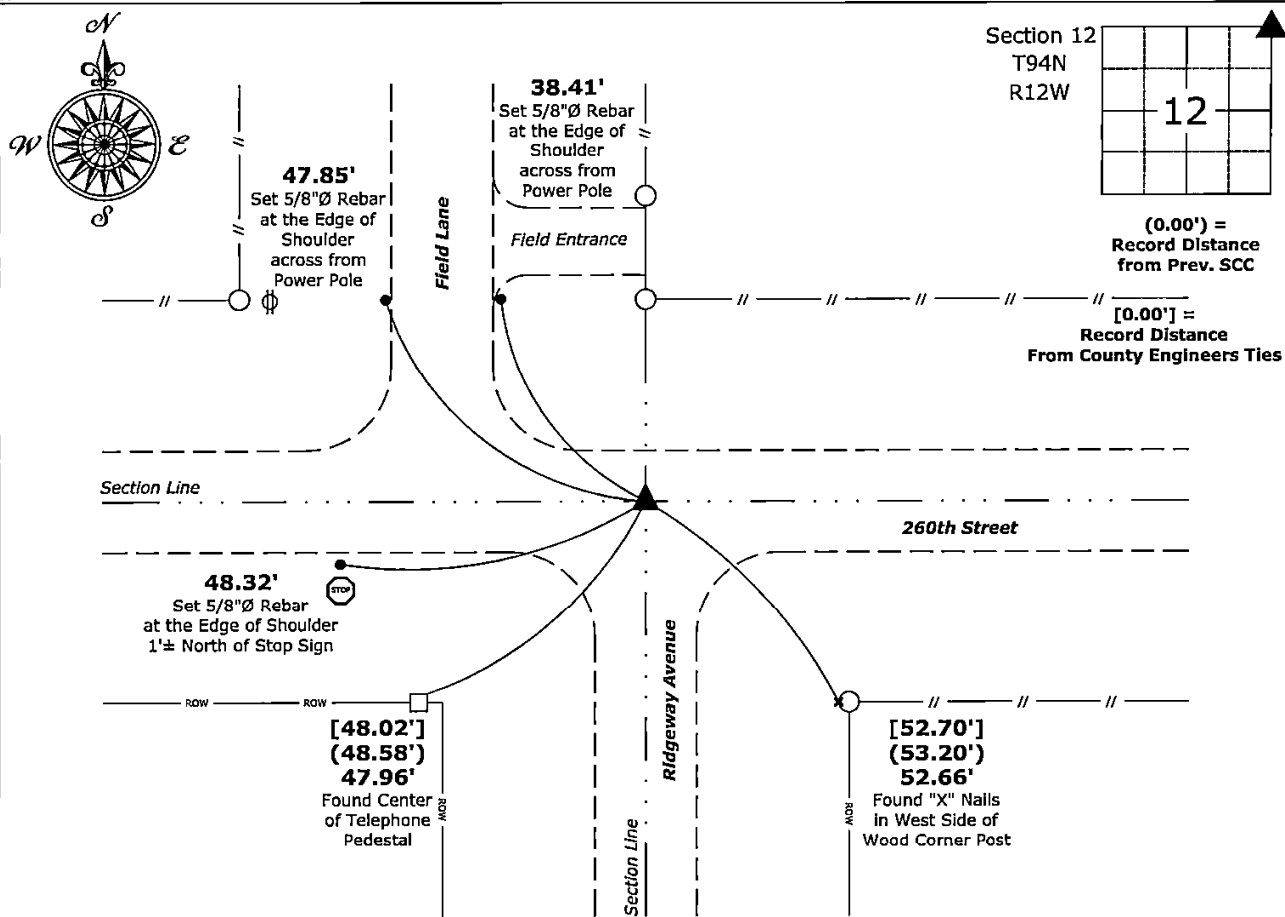
Monument Description and Remarks:

Northeast Corner:

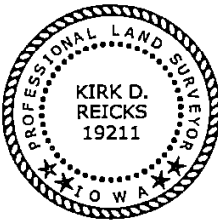
Found 1/2"Ø Rebar w/Yellow Plastic Cap "Chickasaw County" with information obtained from Chickasaw County Engineer's Field Book Dresden Township Ties to Corners, Section 1, Corner B, and with information obtained from the previously recorded Section Corner Certificate.

Plan View - Not to Scale

(Show a minimum of three reference ties to durable physical objects, relevant monuments and physical conditions that will enable recovery of the corner.)



Northeast Corner of Section 12-94-12
Found 1/2"Ø Rebar w/Yellow Plastic Cap "Chickasaw County"



I hereby certify that this land surveying document was prepared by me or under my direct personal supervision and that I am a duly licensed Land Surveyor under the laws of the State of Iowa.
Kirk D. Reicks 12-20-2024
Kirk D. Reicks Date:
License number 19211
My license renewal date is December 31, 2026.
Sheets covered by this seal: Individual sheet only

List Corner to be Indexed			
Corner	Section	Township	Range
NE	12	94	12
Project Number: 2024-148			
FB: Chickasaw 12, Page(s) 79-80			