

Prepared By: Ryland R. Benzing, P.L.S. #22572 Benzing Surveying, LLC, 808 5th Ave. SW Waukon, Iowa 52172 Phone: (563) 568-2136

UNITED STATES PUBLIC LAND SURVEY CORNER CERTIFICATE

OF

Land Survey Monuments situated in Section 24, Township 97 North, Range 14 West, of the Fifth Principal Meridian, Chickasaw County, Iowa.  
Previously recorded in (No Record) in County Recorder's Office.

(book, page, document number, etc.)

(Show reason for preparing this certificate, the evidence and detailed procedures used in establishing the corner positions and monumentation found or placed.)

Monument Description and Remarks:

South 1/4 Corner Section 24

Chickasaw County Engineer's Reference Ties for Corner "A" in Section 24 of Deerfield North show that an iron pin was set to replace a stone and wood stakes. We found a P.K. nail at the approximate centerline of the county road and in line with the fence lines running north and south. We used the monument as the S 1/4 Corner of Section 24-T97N-R14W.

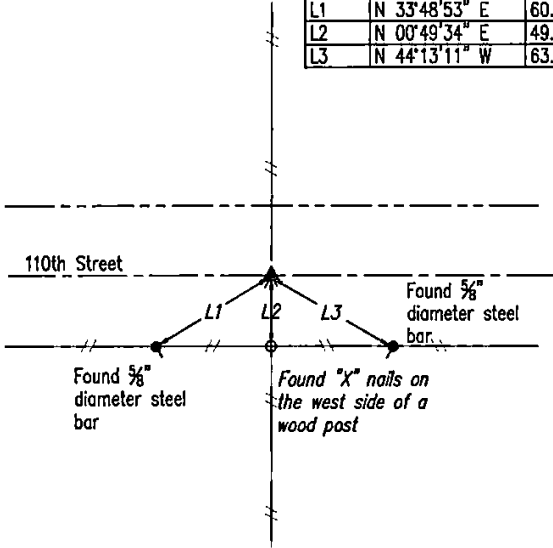
PLAN - VIEW

(Show a minimum of three reference ties to durable physical objects, relevant monuments and physical conditions that will enable recovery of the corner.)

S 1/4 Corner

Found P.K. nail

LINE	BEARING	DISTANCE
L1	N 33°48'53" E	60.43'
L2	N 00°49'34" E	49.60'
L3	N 44°13'11" W	63.14'



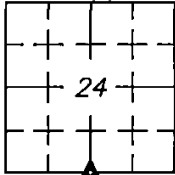
\*Bearings based on the Iowa State Plane Coordinate System North Zone (1401) NAD83 (2011).

I hereby certify that this land surveying document was prepared and the related survey work was performed by me or under my direct personal supervision and that I am a duly licensed Professional Land Surveyor under the laws of the State of Iowa.

Ryland R. Benzing Date: 6-20-25  
Ryland R. Benzing, PLS No. 22572  
My license renewal date is December 31, 2026  
Pages or sheets covered by this seal: 1 of 1

Corner(s) to be Indexed

Corner Section Twp Range  
S 1/4 Cor. 24 97N 14W



Drawn By: JJ