

Prepared By: Ryland R. Benzing, P.L.S. #22572 Benzing Surveying, LLC, 808 5th Ave. SW Waukon, Iowa 52172 Phone: (563) 568-2136

UNITED STATES PUBLIC LAND SURVEY CORNER CERTIFICATE
OF

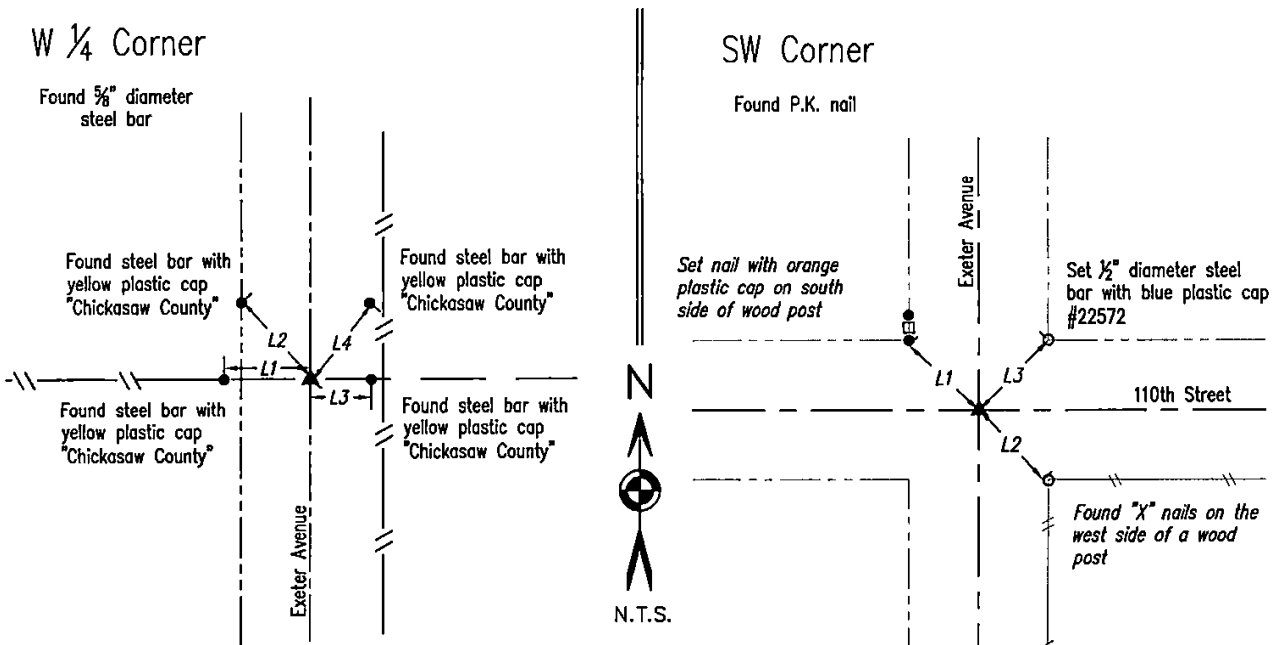
Land Survey Monuments situated in Section 24, Township 97 North, Range 14 West, of the Fifth Principal Meridian, Chickasaw County, Iowa.
Previously recorded in 1) (No Record) 2) (No Record) in County Recorder's Office.

(book, page, document number, etc.)
(Show reason for preparing this certificate, the evidence and detailed procedures used in establishing the corner positions and monumentation found or placed.)
Monument Description and Remarks:

- 1) West Quarter Corner Sec. 24
Chickasaw County Engineer's Reference Ties for Corner "C" in Section 23 of Deerfield North show that an iron pin was set to replace a spike in 1956. We found a $\frac{5}{8}$ " diameter steel bar at the approximate centerline of the county road and inline with the fence line running west. We used the monument as the W $\frac{1}{4}$ Corner of Section 24-T87N-R14W.
- 2) Southwest Corner Section 24
Chickasaw County Engineer's Reference Ties for Corner "B" in Section 23 of Deerfield North show that an iron pin was set to replace a sled runner. We found a P.K. nail at the approximate centerline-centerline intersection of the county roads. We used the monument as the SW Corner of Section 24-T87N-R14W.

PLAN - VIEW

(Show a minimum of three reference ties to durable physical objects, relevant monuments and physical conditions that will enable recovery of the corner.)



LINE	BEARING	DISTANCE
L1	S 89°16'21" E	50.09'
L2	S 64°46'03" E	36.04'
L3	S 87°43'08" W	28.17'
L4	S 66°06'31" W	30.80'

LINE	BEARING	DISTANCE
L1	S 36°26'52" E	54.56'
L2	N 36°00'57" W	56.41'
L3	S 32°38'48" W	60.11'



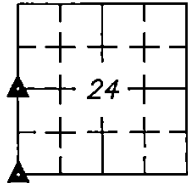
*Bearings based on the Iowa State Plane Coordinate System North Zone (1401) NAD83 (2011).

I hereby certify that this land surveying document was prepared and the related survey work was performed by me or under my direct personal supervision and that I am a duly licensed Professional Land Surveyor under the laws of the State of Iowa.

Ryland R. Benzing Date: 6.20.25
Ryland R. Benzing, PLS No. 22572
My license renewal date is December 31, 2026
Pages or sheets covered by this seal: 1 of 1

Corner(s) to be Indexed

Corner	Section	Twp	Range
W 1/4 Cor.	24	97N	14W
SW Cor.	24	97N	14W



Drawn By: JJ