



PREPARED BY : North Star Land Surveyors LLC, 107 Pine Street, New Hampton, IA 50659, Phone : 641-330-6948

## UNITED STATES PUBLIC LAND CORNER CERTIFICATE

OF:

Land Survey Monuments situated in Section 36, Township 96 North, Range 14 West of the Fifth Principal Meridian, Chickasaw County, Iowa. Previously recorded in (1) doc. 2012-1743 (2) doc. 2008-1016 in Office of County Recorder.

(book, page, document number, etc.)

(Show reason for preparing this certificate, the evidence and detailed procedures used in establishing the corner positions and monumentation found or placed.)

**Reason for Recording:**

- (1) No certificate on file. (1) Corner Monument has been replaced or modified.  
 (1)(2) The existing reference ties are incorrect or changed. (2) Corner position differs from that previously recorded.

**Monument Description and Remarks :**

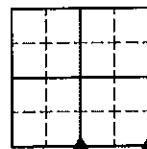
(1) S 1/4 Corner: Found 1/2" rebar with pink ribbon and red cap (illegible). Dug 18" deep and probed to depth of 4-1/2 feet. No signal from locator. Found rebar in line with fence North and 33 feet from bottom of corner post. Replaced found rebar with 1/2" x 24" rebar, orange ribbon, and yellow cap embossed 18149. Rebar is 6" deep.

(2) SE Corner: Found 5/8" rebar 4" deep per certificate recorded in document 2008-1016, County Recorder's Office.

### PLAN -VIEW

Not to Scale

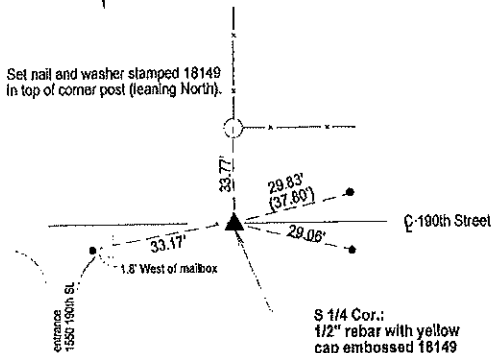
(Show a minimum of three reference ties to durable physical objects, relevant monuments and physical conditions that will enable recovery of the corner.)



Section : 36  
 Twp. : Deerfield (South)

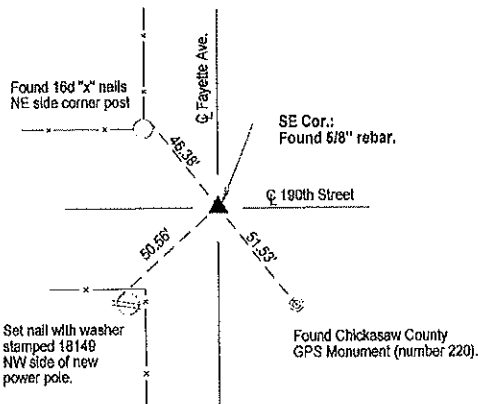
1) Cor A  
 36-96-14

2) Cor B  
 36-96-14



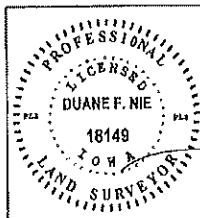
S 1/4 Cor.:  
 1/2" rebar with yellow cap embossed 18149

**LEGEND.**  
 ● = Found 1/2" rebar in shoulder of road.  
 (0.0) = Recorded as



(2) SE Corner Section 36 Twp. 96 Rng. 14 W.

(1) S1/4 Corner Section 36 Twp. 96 Rng. 14 W.



I hereby certify that this land surveying document was prepared and the related survey work was performed by me or under my direct personal supervision and that I am a duly Licensed Land Surveyor under the laws of the State of Iowa.

Duane F. Nie License number 18149 Date 07/26/2021  
 My license renewal date is December 31, 2022  
 Pages or sheets covered by this seal. This sheet only

List Corners to be Indexed			
Corner	Section	Township	Range
(1) S 1/4	36	96 N	14 W
(2) SE	36	96 N	14 W

Project : 1936961421SchwickerathAndy