

**000000**

# United States Public Land Survey Corner Certificate

Land Survey Monument situated in  
Section **30**, Township **96** North, Range **14** West of the Fifth Principal Meridian, **Chickasaw** County, Iowa.  
Not on file in the County Recorder's Office.

This certificate is being prepared in compliance with Iowa Code Chapter 355.11 because:

- ☒ There is no certificate on file for this corner.  
☐ There are no longer three valid ties of record.  
☐ There are changes to reference ties of record.  
☐ There is change of monumentation of record.  
☐ To clarify description of record monument (ties).

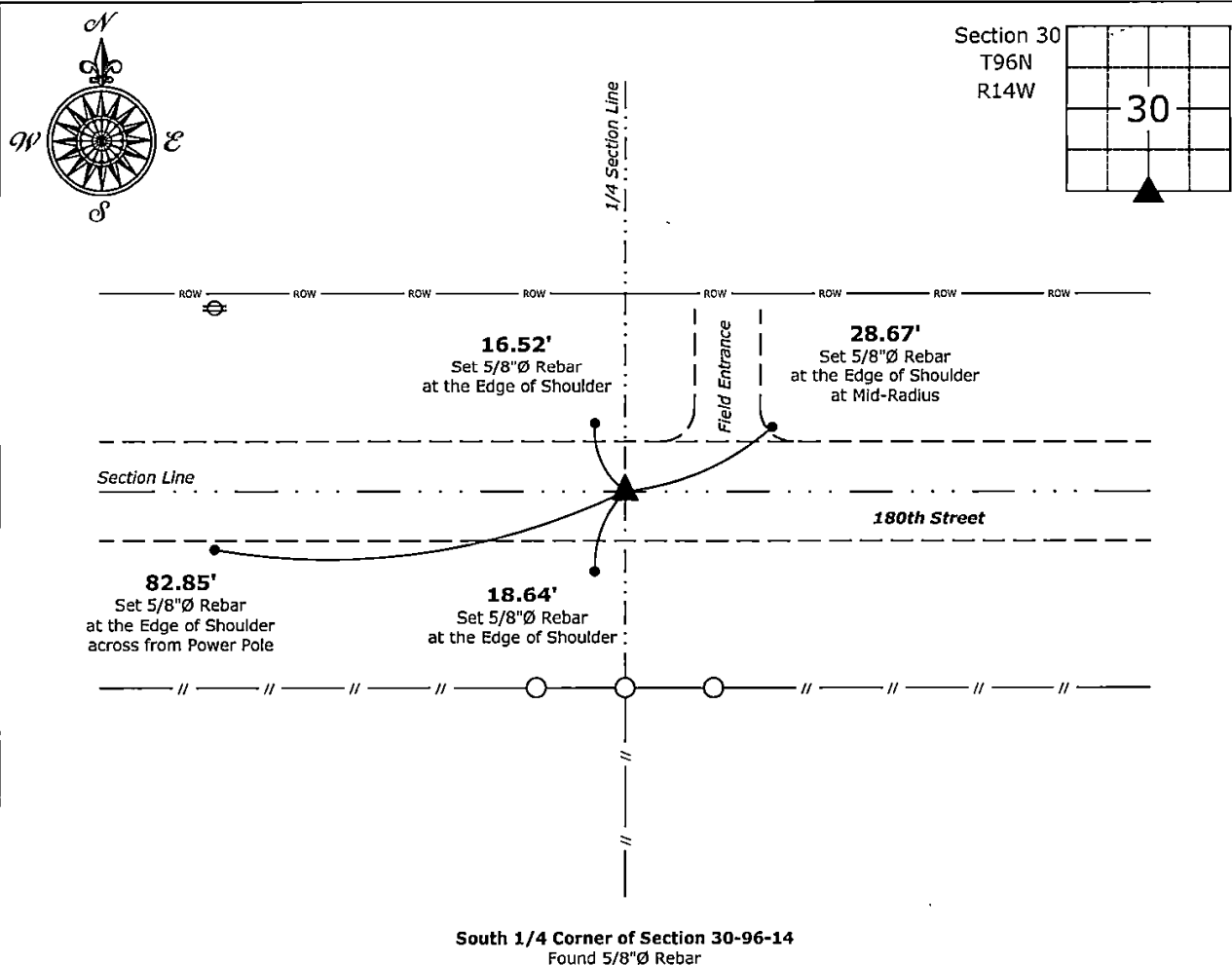
**Monument Description and Remarks:**

**South 1/4 Corner:**

Found 5/8"Ø Rebar with Information obtained from the County Engineer's Office.

### Plan View - Not to Scale

(Show a minimum of three reference ties to durable physical objects, relevant monuments and physical conditions that will enable recovery of the corner.)



I hereby certify that this land surveying document was prepared and the related survey work was performed by me or under my direct personal supervision and that I am a duly licensed Land Surveyor under the laws of the State of Iowa.

Kurt D. Paul 3-25-2025

Kirk D. Reicks

Date:

License Number 19211

My license renewal date is December 31, 2026.

My license renewal date is December 31, 2026.  
 Sheets covered by this seal: Individual sheet only

## List Corner to be Indexed

Corner	Section	Township	Range
S 1/4	30	96	14

Project Number: 2025-030

FB: Chickasaw 14, Page(s) 6-7

File: S:\\_ Projects - NHO\County Control Systems - NHO\CHICKASAW\CHICK-17\CHICK-17 - 2025.dwg, 3/21/2025 11:24:10 AM