

Prepared by & Return to: Kirk D. Reicks, HRS, LLC, 10 East Main Street, New Hampton, IA 50659, Phone 641-394-2725

United States Public Land Survey Corner Certificate

Land Survey Monument situated in
Section 1, Township 96 North, Range 14 West of the Fifth Principal Meridian, Chickasaw County, Iowa.
Not on file in the County Recorder's Office.

This certificate is being prepared in compliance with Iowa Code Chapter 355.11 because:

☒ There is no certificate on file for this corner.
☐ There are no longer three valid ties of record.
☐ There are changes to reference ties of record.
☐ There is change of monumentation of record.
☐ To clarify description of record monument (ties).

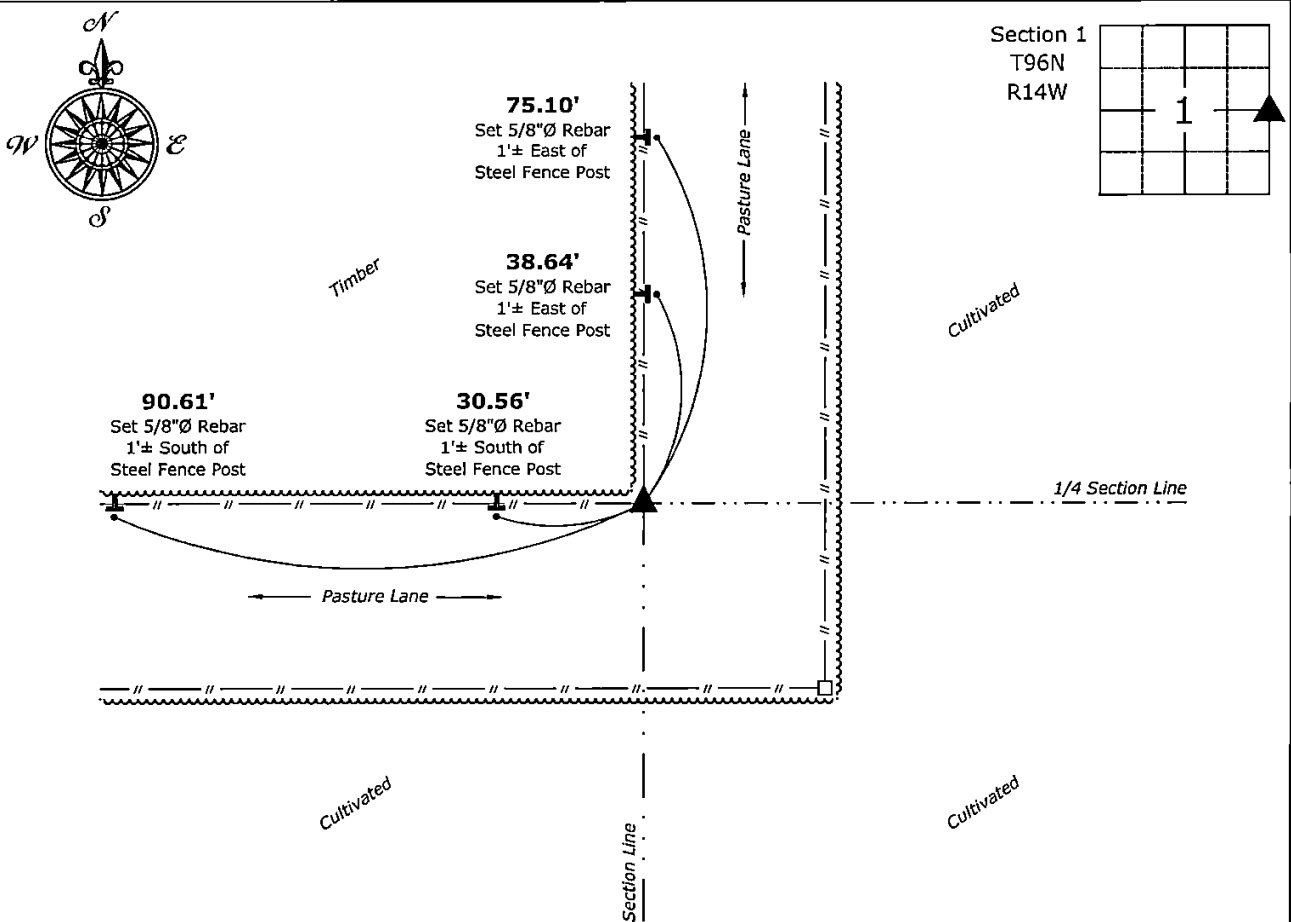
Monument Description and Remarks:

East 1/4 Corner:

Searched a 15'± Radius around a Wood Corner Post with a metal detector and probe. Did not locate any type of Survey Monument. Set 5/8"Ø Rebar w/2"Ø Aluminum Cap PLS 19211 on the South Side of a Wood Corner Post after comparing the position to adjacent Section Corners.

Plan View - Not to Scale

(Show a minimum of three reference ties to durable physical objects, relevant monuments and physical conditions that will enable recovery of the corner.)



East 1/4 Corner of Section 1-96-14
Set 5/8"Ø Rebar w/2"Ø Aluminum Cap PLS 19211

KIRK D. REICKS
19211

PROFESSIONAL LAND SURVEYOR
IOWA

I hereby certify that this land surveying document was prepared and the related survey work was performed by me or under my direct personal supervision and that I am a duly licensed Land Surveyor under the laws of the State of Iowa.

Kirk D. Reicks

Date:

2-20-2025

License number 19211
My license renewal date is December 31, 2026.
Sheets covered by this seal: Individual sheet only

List Corner to be Indexed

Corner	Section	Township	Range
E 1/4	1	96	14

Project Number: 2025-011

FB: Chickasaw 13, Page(s) 35-36

File: S:_ Projects - NHO\County Control Systems - NHO\CHICKASAW\CHICK-10 - 2024.dwg, 2/19/2025 4:17:59 PM