

[illegible]

United States Public Land Survey Corner Certificate

Land Survey Monument situated in
Section **32**, Township **95** North, Range **13** West of the Fifth Principal Meridian, **Chickasaw** County, Iowa.
Not on file in the County Recorder's Office.

This certificate is being prepared in compliance with Iowa Code Chapter 355.11 because:

- ☒ There is no certificate on file for this corner.
☐ There are no longer three valid ties of record.
☐ There are changes to reference ties of record.
☐ There is change of monumentation of record.
☐ To clarify description of record monument (ties).

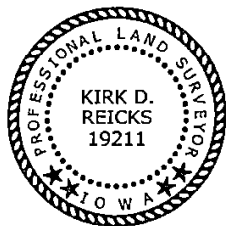
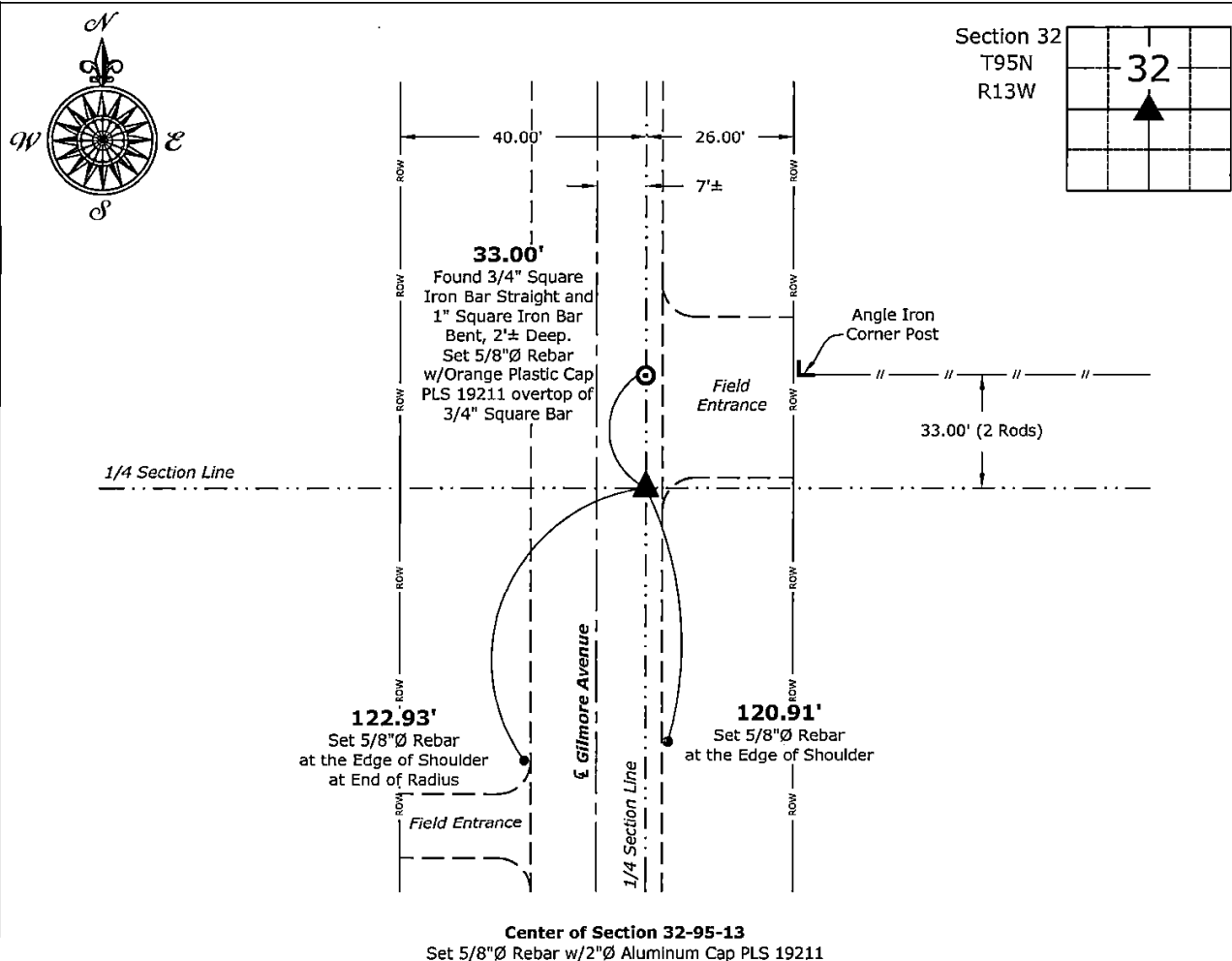
Monument Description and Remarks:

Center of Section:

Set 5/8"Ø Rebar w/2"Ø Aluminum Cap PLS 19211. 33.00' (2 Rods) South of Found Monument and on the Extension of a line from the North 1/4 Corner to and through said Found Monument, after comparing the position's location relative to other adjacent Corners.

Plan View - Not to Scale

(Show a minimum of three reference ties to durable physical objects, relevant monuments and physical conditions that will enable recovery of the corner.)



I hereby certify that this land surveying document was prepared and the related survey work was performed by me or under my direct personal supervision and that I am a duly licensed Land Surveyor under the laws of the State of Iowa.

Kristen D. [Signature] 8-9-2024

Kirk D. Reicks

Date:

License number 19211

My license renewal date is December 31, 2024.

My license renewal date is December 31, 2021.
 Sheets covered by this seal: Individual sheet only

List Corner to be Indexed

Corner	Section	Township	Range
CTR	32	95	13

Project Number: 2024-093

FB: Chickasaw 13, Page(s) 7-8