

000000

United States Public Land Survey Corner Certificate

Land Survey Monument situated in
Section 27, Township 95 North, Range 13 West of the Fifth Principal Meridian, **Chickasaw** County, Iowa.
On file in **Document #2008-0687** in the County Recorder's Office.

This certificate is being prepared in compliance with Iowa Code Chapter 355.11 because:

- ☐ There is no certificate on file for this corner.
☒ There are no longer three valid ties of record.
☐ There are changes to reference ties of record.
☐ There is change of monumentation of record.
☐ To clarify description of record monument (ties).

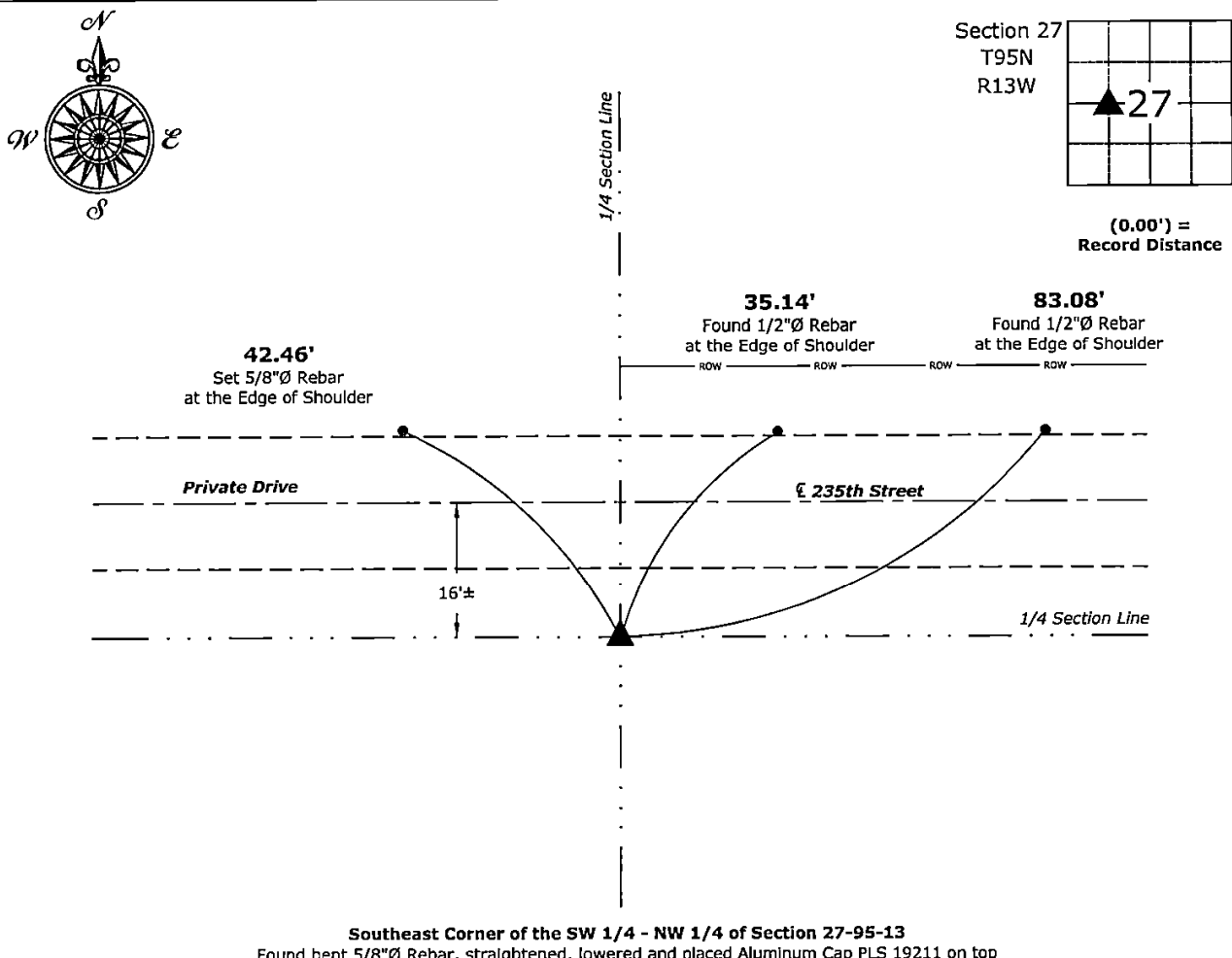
Monument Description and Remarks:

Southeast Corner of the SW 1/4 - NW 1/4:

Found bent 5/8"Ø Rebar, straightened, lowered and placed Aluminum Cap PLS 19211 on top with information obtained from the previously recorded Section Corner Certificate.

Plan View - Not to Scale

(Show a minimum of three reference ties to durable physical objects, relevant monuments and physical conditions that will enable recovery of the corner.)



Southeast Corner of the SW 1/4 - NW 1/4 of Section 27-95-13
Found bent 5/8"Ø Rebar, straightened, lowered and placed Aluminum Cap PLS 19211 on top



I hereby certify that this land surveying document was prepared and the related survey work was performed by me or under my direct personal supervision and that I am a duly licensed Land Surveyor under the laws of the State of Iowa.

Kirk D. Reicks 9-18-2025
Kirk D. Reicks Date:

License Number 19211
My license renewal date is December 31, 2026.
Sheets covered by this seal: Individual sheet only

List Corner to be Indexed

Corner	Section	Township	Range
SE-SW-NW	27	95	13

Project Number: 2025-084

FB: Chickasaw 13, Page(s) 63-64

File: S:\ Projects - NHO\County Control Systems - NHO\CHICKASAW\CHICK-34\CHICK-34 - 2025.dwg, 9/18/2025 9:51:45 AM