

[illegible]

Prepared by & Return to: Kirk D. Reicks, HRS, LLC, 10 East Main Street, New Hampton, IA 50659, Phone 641-394-2725

United States Public Land Survey Corner Certificate

Land Survey Monument situated in
Section **9**, Township **95** North, Range **14** West of the Fifth Principal Meridian, **Chickasaw** County, Iowa.
Not on file in the County Recorder's Office.

This certificate is being prepared in compliance with Iowa Code Chapter 355.11 because:

- ☒ There is no certificate on file for this corner.
☐ There are no longer three valid ties of record.
☐ There are changes to reference ties of record.
☐ There is change of monumentation of record.
☐ To clarify description of record monument (ties).

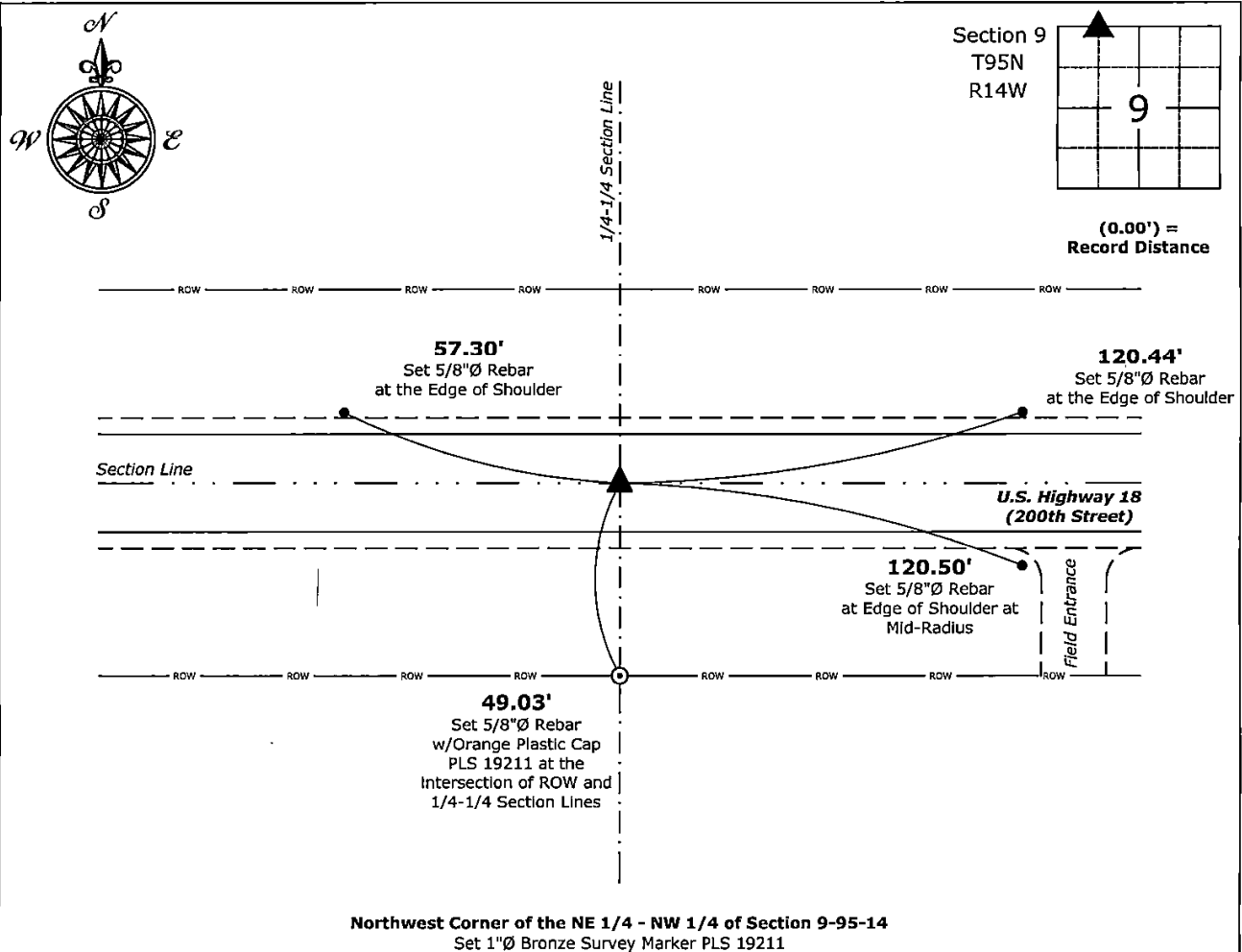
Monument Description and Remarks:

Northwest Corner of the NE 1/4 - NW 1/4:

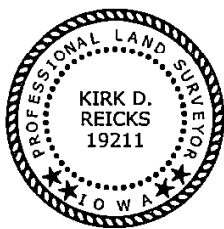
Set 1"Ø Bronze Survey Marker PLS 19211 equidistant and on line between the Northwest and the North Quarter Corners of said Section.

Plan View - Not to Scale

(Show a minimum of three reference ties to durable physical objects, relevant monuments and physical conditions that will enable recovery of the corner.)



Northwest Corner of the NE 1/4 - NW 1/4 of Section 9-95-14
Set 1"Ø Bronze Survey Marker PLS 19211



I hereby certify that this land surveying document was prepared and the related survey work was performed by me or under my direct personal supervision and that I am a duly licensed Land Surveyor under the laws of the State of Iowa.

Surveyor under the laws of the State of Iowa.
Kurt D. Paul 8-26-2025

Kirk D. Reicks

Date:

License Number 19211

My license renewal date is December 31, 2026.

My license renewal date is December 31, 2020.
 Sheets covered by this seal: Individual sheet only

List Corner to be Indexed

Corner	Section	Township	Range
NW-NE-NW	9	95	14

Project Number: 2025-077

FB: Chickasaw 13, Page(s) 55-56

File: S:__ Projects - NHO\County Control Systems - NHO\CHICKASAW\CHICK-25\CHICK-25 - 2025.dwg, 8/26/2025 2:57:55 PM