

# United States Public Land Survey Corner Certificate

Land Survey Monument situated in  
Section **9**, Township **95** North, Range **14** West of the Fifth Principal Meridian, **Chickasaw** County, Iowa.  
On file in **Document #2011-0763** in the County Recorder's Office.

This certificate is being prepared in compliance with Iowa Code Chapter 355.11 because:

- ☐ There is no certificate on file for this corner.  
☒ There are no longer three valid ties of record.  
☒ There are changes to reference ties of record.  
☒ There is change of monumentation of record.  
☐ To clarify description of record monument (ties).

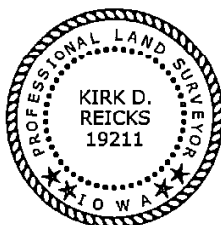
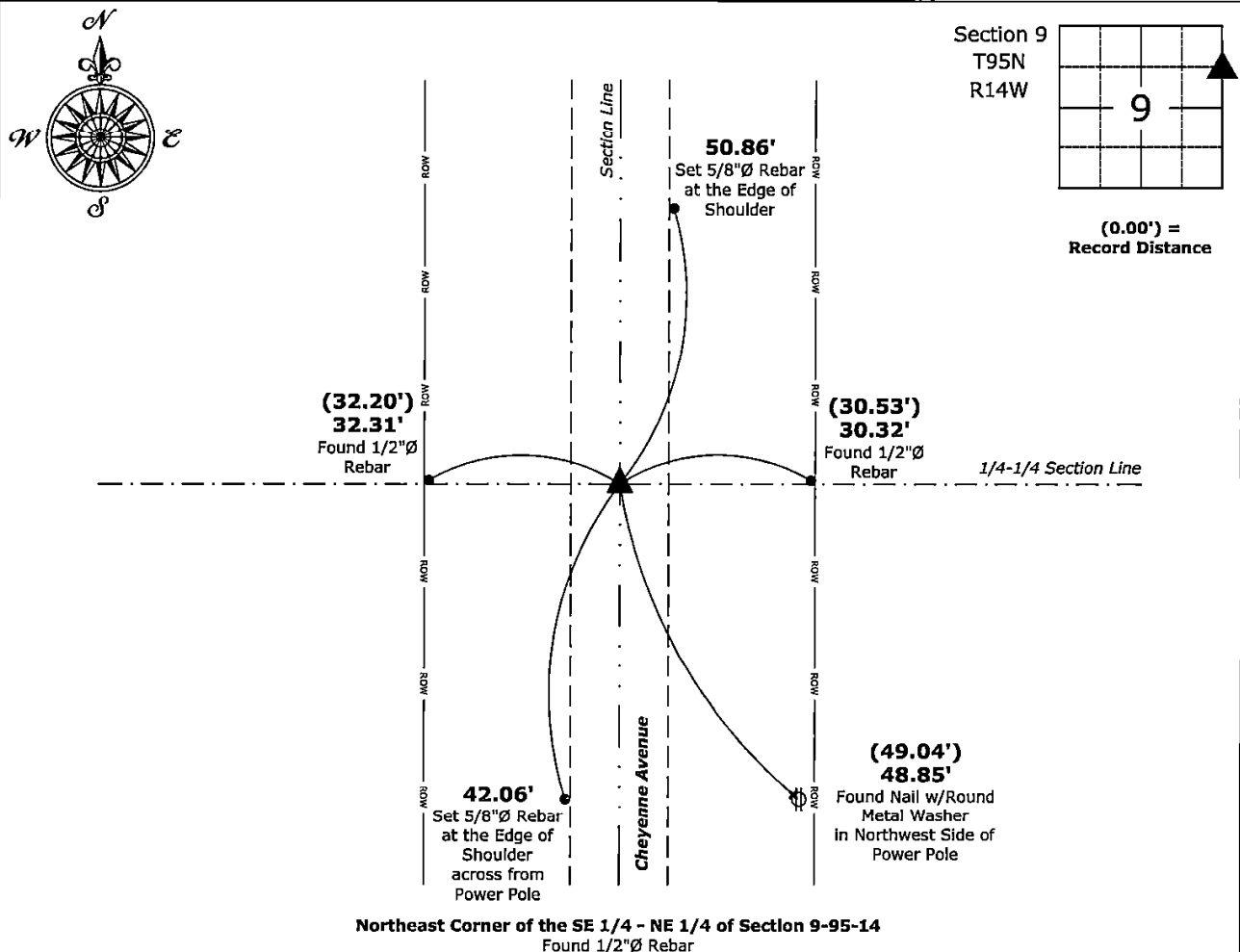
**Monument Description and Remarks:**

**Northeast Corner of the SE 1/4 - NE 1/4:**

Found 1/2"Ø Rebar with information obtained from the previously recorded Section Corner Certificate.

### Plan View - Not to Scale

(Show a minimum of three reference ties to durable physical objects, relevant monuments and physical conditions that will enable recovery of the corner.)



I hereby certify that this land surveying document was prepared and the related survey work was performed by me or under my direct personal supervision and that I am a duly licensed Land Surveyor under the laws of the State of Iowa.

Kirk D. Reicks 3-5-2025  
Kirk D. Reicks Date:

License Number 19211  
My license renewal date is December 31, 2026.  
Sheets covered by this seal: Individual sheet only

## List Corner to be Indexed

Corner	Section	Township	Range
NE-SE-NE	9	95	14

---

---

**Project Number: 2025-026**

FB: Chickasaw 14, Page(s) 4-5