

[illegible]

United States Public Land Survey Corner Certificate

Land Survey Monument situated in
Section **20**, Township **95** North, Range **14** West of the Fifth Principal Meridian, **Chickasaw** County, Iowa.
Not on file in the County Recorder's Office.

This certificate is being prepared in compliance with Iowa Code Chapter 355.11 because:

- ☒ There is no certificate on file for this corner.
☐ There are no longer three valid ties of record.
☐ There are changes to reference ties of record.
☐ There is change of monumentation of record.
☐ To clarify description of record monument (ties).

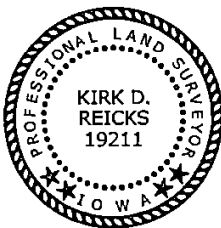
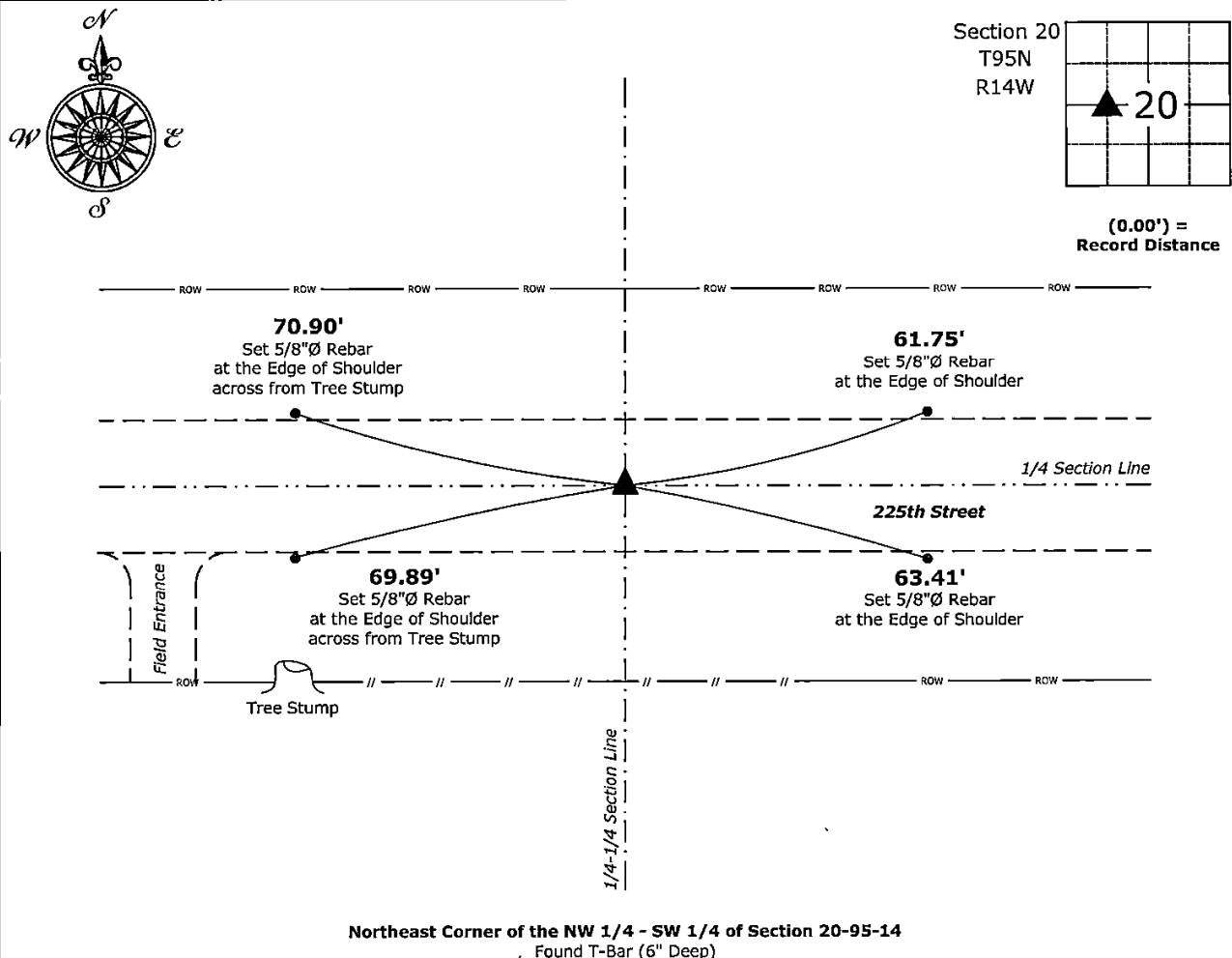
Monument Description and Remarks:

Northeast Corner of the NW 1/4 - SW 1/4:

Found T-Bar (6" Deep) with information obtained from a Survey and Plat, as recorded in Book 110, Page 185 on file on the County Recorder's Office.

Plan View - Not to Scale

(Show a minimum of three reference ties to durable physical objects, relevant monuments and physical conditions that will enable recovery of the corner.)



I hereby certify that this land surveying document was prepared and the related survey work was performed by me or under my direct personal supervision and that I am a duly licensed Land Surveyor under the laws of the State of Iowa.

Kirk D. Reicks 2-28-2025
Kirk D. Reicks Date:

License Number 19211
My license renewal date is December 31, 2026.
Sheets covered by this seal: Individual sheet only

List Corner to be Indexed

Corner	Section	Township	Range
NE-NW-SW	20	95	14

Project Number: 2025-017

FB: Chickasaw 13, Page(s) 33-34

File: S:\ Projects - NHO\County Control Systems - NHO\CHICKASAW\CHICK-32\CHICK-32 - 2024.dwg, 2/27/2025 10:11:02 AM