



# United States Public Land Survey Corner Certificate

Land Survey Monument situated in  
Section **17**, Township **95** North, Range **14** West of the Fifth Principal Meridian, **Chickasaw** County, Iowa.  
Not on file in the County Recorder's Office.

This certificate is being prepared in compliance with Iowa Code Chapter 355.11 because:

- ☒ There is no certificate on file for this corner.  
☐ There are no longer three valid ties of record.  
☐ There are changes to reference ties of record.  
☐ There is change of monumentation of record.  
☐ To clarify description of record monument (ties).

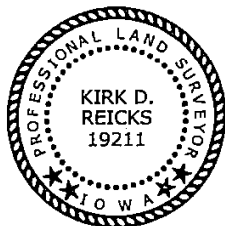
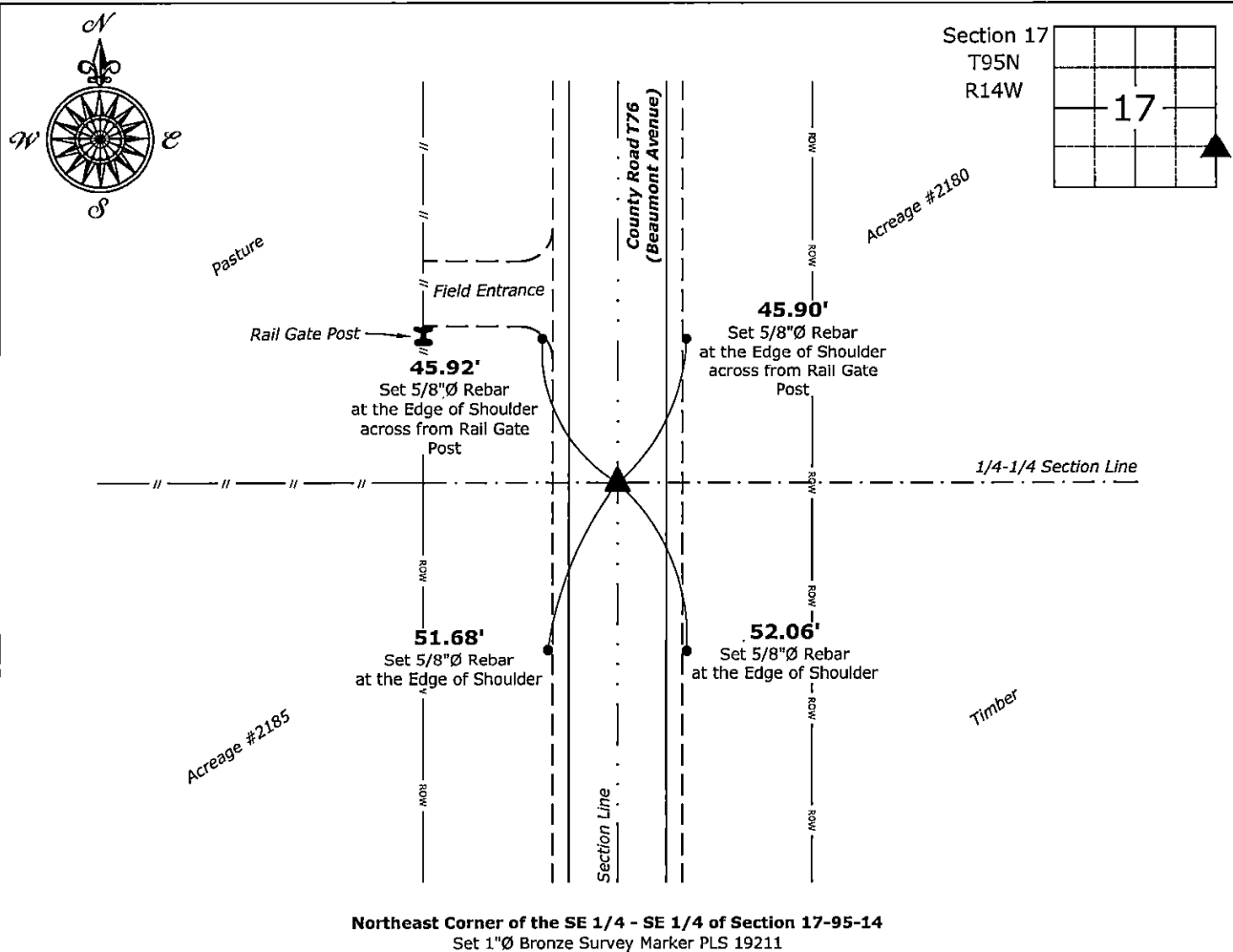
**Monument Description and Remarks:**

**Northeast Corner of the SE 1/4 - SE 1/4:**

Set 1"Ø Bronze Survey Marker PLS 19211 on line between the East 1/4 and Southeast Corners of said Section at record distance from the East 1/4 Corner with information obtained from Surveyor's Book, Page 95 on file at the County Engineer's Office. Corner is at the Extension of an Old Possession Line fence to the West.

### Plan View - Not to Scale

(Show a minimum of three reference ties to durable physical objects, relevant monuments and physical conditions that will enable recovery of the corner.)



I hereby certify that this land surveying document was prepared and the related survey work was performed by me or under my direct personal supervision and that I am a duly licensed Land Surveyor under the laws of the State of Iowa.

*Kurt D. Paul* 2-28-2025

Kirk D. Reicks

Date:

License number 19211

My license renewal date is December 31, 2026.

My license renewal date is December 31, 2020.  
 Sheets covered by this seal: Individual sheet only

## List Corner to be Indexed

Corner	Section	Township	Range
NE-SE-SE	17	95	14

Project Number: 2025-019

FB: Chickasaw 14, Page(s) 1-3

File: S:\\_ Projects - NHO\County Control Systems - NHO\CHICKASAW\CHICK-25 - 2024.dwg, 2/27/2025 1:46:08 PM