

[illegible]

United States Public Land Survey Corner Certificate

Land Survey Monument situated in
Section **11**, Township **95** North, Range **14** West of the Fifth Principal Meridian, **Chickasaw** County, Iowa.
On file in **Book 145, Page 411** in the County Recorder's Office.

This certificate is being prepared in compliance with Iowa Code Chapter 355.11 because:

- ☐ There is no certificate on file for this corner.
☐ There are no longer three valid ties of record.
☒ There are changes to reference ties of record.
☐ There is change of monumentation of record.
☐ To clarify description of record monument (ties).

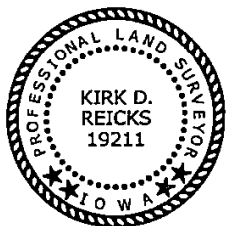
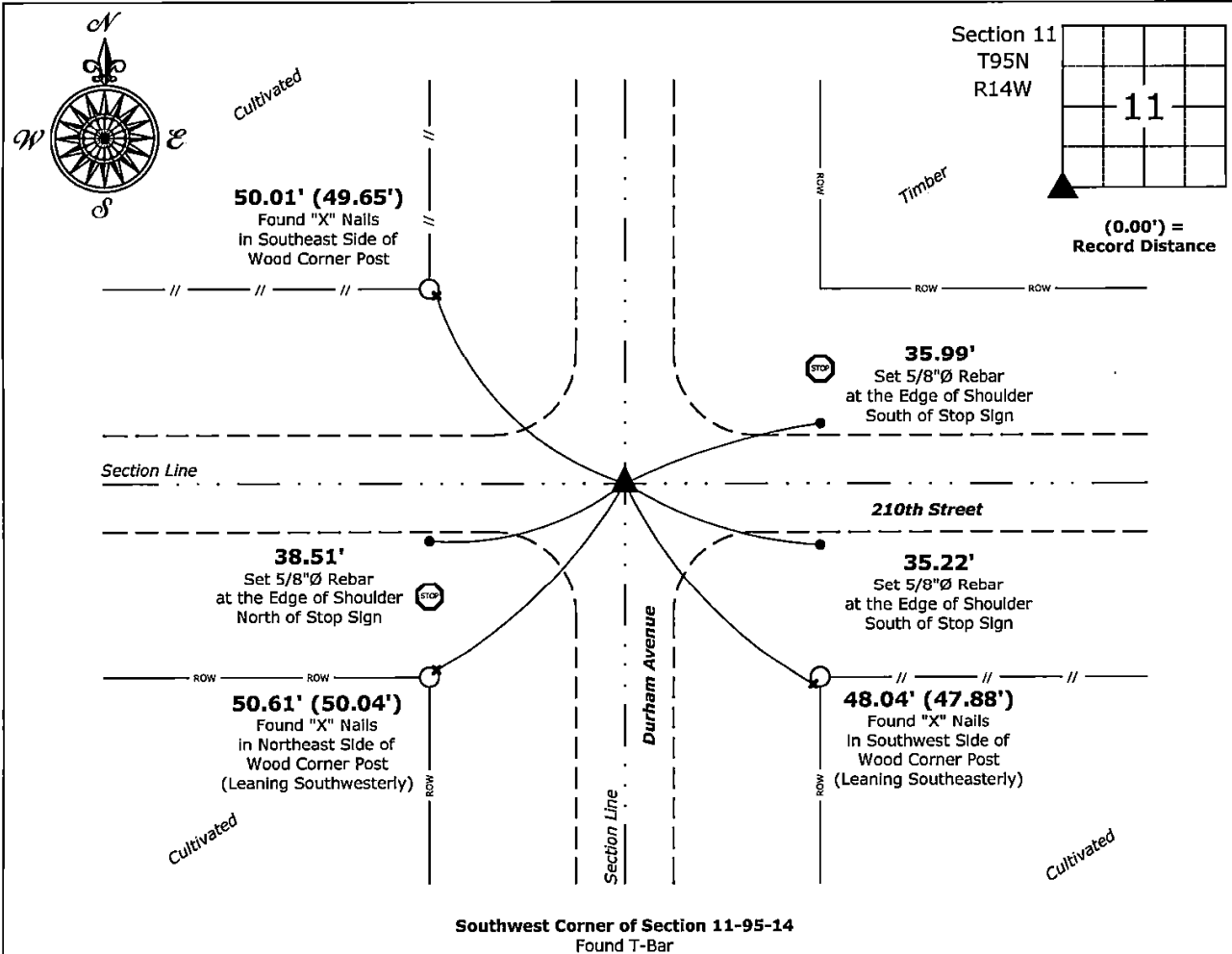
Monument Description and Remarks:

Southwest Corner:

Found T-Bar with information obtained from the previously recorded Section Corner Certificate.

Plan View - Not to Scale

(Show a minimum of three reference ties to durable physical objects, relevant monuments and physical conditions that will enable recovery of the corner.)



I hereby certify that this land surveying document was prepared and the related survey work was performed by me or under my direct personal supervision and that I am a duly licensed Land Surveyor under the laws of the State of Iowa.

Kurt D. Thack 5-20-2025

Kirk D. Reicks

Date:

License Number 19211

My license renewal date is December 31, 2026.

Sheets covered by this seal: Individual sheet only

List Corner to be Indexed

Corner	Section	Township	Range
SW	11	95	14

Project Number: 2025-052

FB: Chickasaw 13, Page(s) 48-49

File: S:_ Projects - NHO\County Control Systems - NHO\CHICKASAW\CHICK-26 - 2025.dwg, 5/20/2025 1:44:07 PM