

Prepared by & Return to: Kirk D. Reicks, HRS, LLC, 10 East Main Street, New Hampton, IA 50659, Phone 641-394-2725

United States Public Land Survey Corner Certificate

Land Survey Monument situated in  
Section 11, Township 95 North, Range 14 West of the Fifth Principal Meridian, Chickasaw County, Iowa.  
On file in Document #2002-1932 in the County Recorder's Office.

This certificate is being prepared in compliance with Iowa Code Chapter 355.11 because:

☐ There is no certificate on file for this corner.  
☐ There are no longer three valid ties of record.  
☒ There are changes to reference ties of record.  
☒ There is change of monumentation of record.  
☐ To clarify description of record monument (ties).

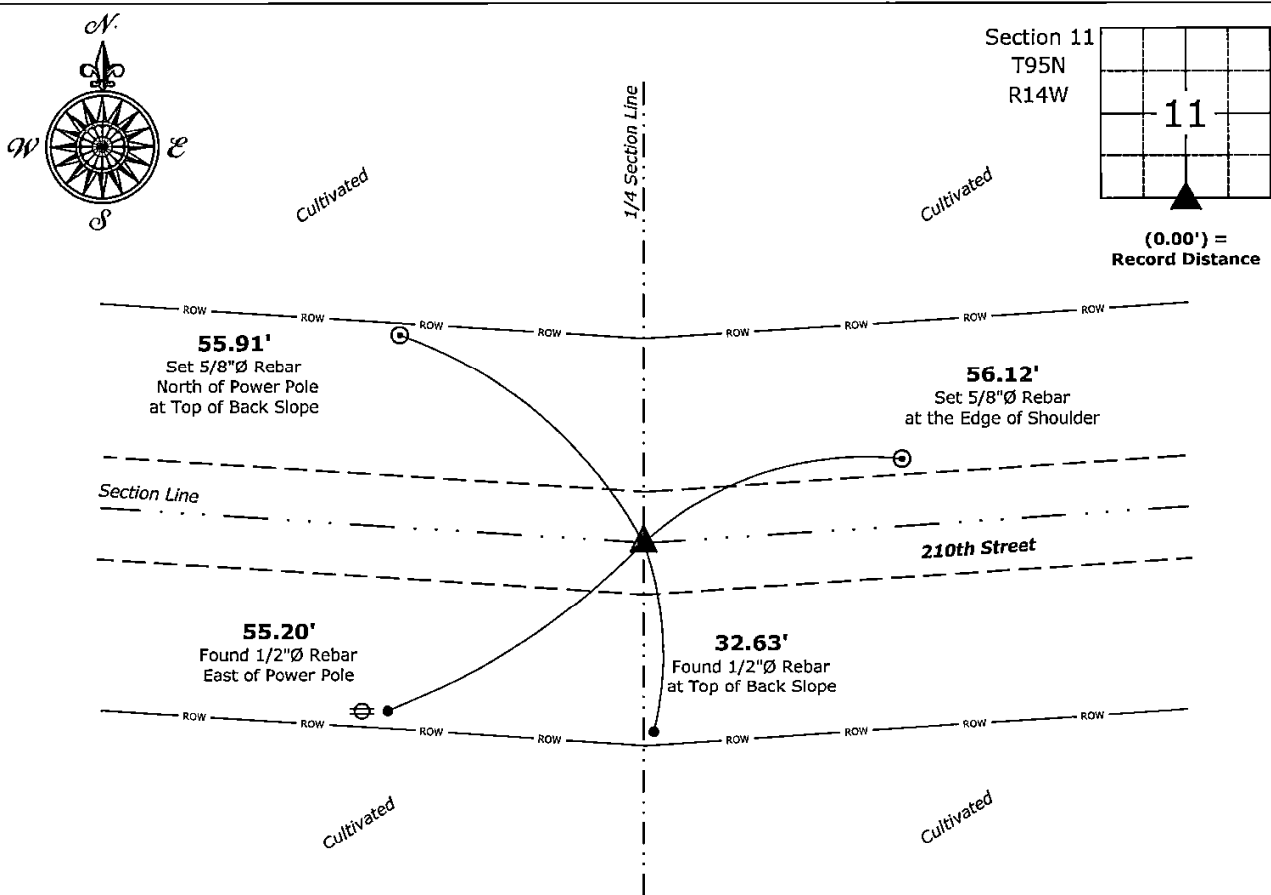
Monument Description and Remarks:

South 1/4 Corner:

Set 5/8"Ø Rebar w/2"Ø Aluminum Cap PLS 19211 from the two remaining reference ties after comparing the position's location relative to other adjacent Corners. Set two new ties to aid in the future recovery of Corner. This position was only accepted after an exhaustive search for the monument as indicated on the previously recorded Section Corner Certificate. Previous monument appears to have been graded out.

Plan View - Not to Scale

(Show a minimum of three reference ties to durable physical objects, relevant monuments and physical conditions that will enable recovery of the corner.)



South 1/4 Corner of Section 11-95-14  
Set 5/8"Ø Rebar w/2"Ø Aluminum Cap PLS 19211



I hereby certify that this land surveying document was prepared and the related survey work was performed by me or under my direct personal supervision and that I am a duly licensed Land Surveyor under the laws of the State of Iowa.

*Kirk D. Reicks* 5-20-2025  
Kirk D. Reicks Date:  
License Number 19211  
My license renewal date is December 31, 2026.  
Sheets covered by this seal: Individual sheet only

List Corner to be Indexed			
Corner	Section	Township	Range
S 1/4	11	95	14

Project Number: 2025-052
FB: Chickasaw 13, Page(s) 48-49