

Jacksonville N

Cor B1, C+C, See After sec 36 N

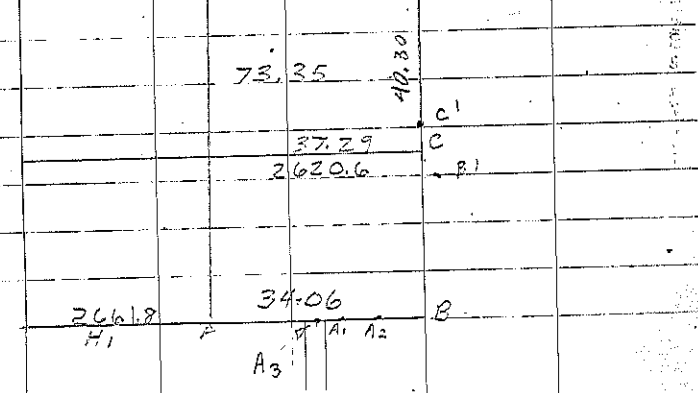
A<sub>1</sub> Set Cement Nail in Asph.  
9-6-67 RC Demas Ties OK 3-6-74 PK  
Reset Nail 6-19-74 PK  
Set PK nail in new mat 9-9-08

A<sub>2</sub> Set Cement Nail in Asph  
9-6-67 R.C.D.  
Ties OK 3-6-74 V.K.K.  
Reset Nail 6-19-74 PK

H<sub>1</sub> Hub 1922 Jerico (Co. Rd. Tracing)  
Fence SPT (P.O.J. ans N. 1796  
Could NOT Find Set pin For  
CONST. Purpose 9-28-59 OK 3-6-74  
Set PK in new mat 9-9-08  
STONE FOUND ORIGINAL CORNER

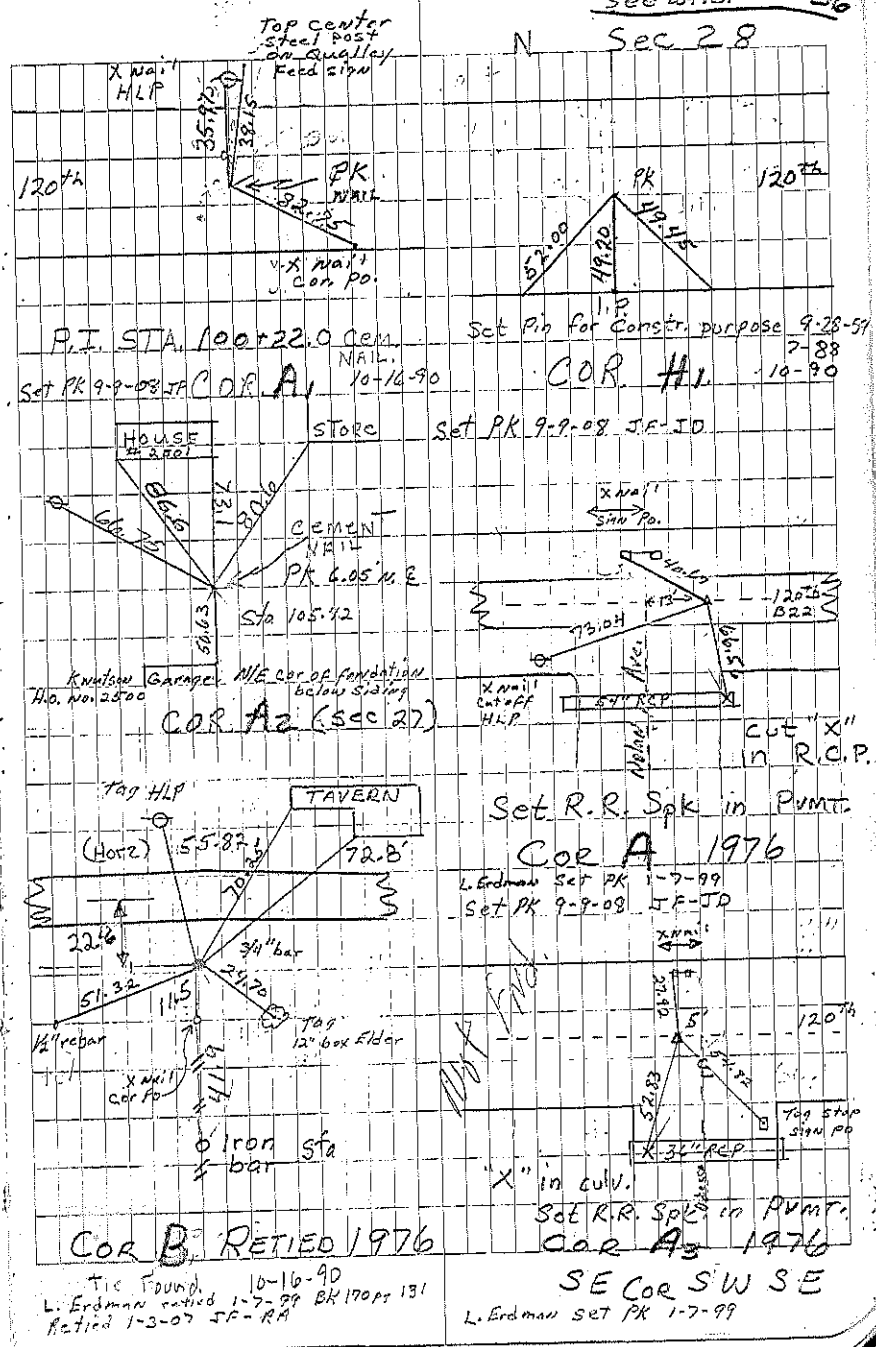
B I.P. 1927 SET I.P. WITH TOP 6"  
above GROUND LINE  
Found 1" bar 4' deep. Raised 3' with 3/4" bar 10-12-99

A & A<sub>3</sub> S 1/4 Cor & SE Cor SW SE established  
1976 by Roger D. Hanson, R.L.S. 99.  
a part of a survey of a parcel  
in the NE cor of NW NE of Sec. 33.  
Plot & Notes in 1976 Road Vacation File.  
2262 26689 STONE



See after Sec N 36

N Sec 28



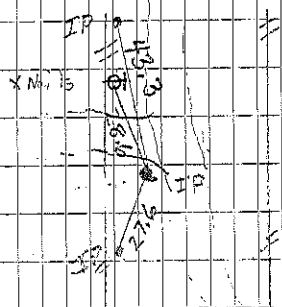
Tie Found. 10-16-90  
L. Erdman retied 1-7-99 BK 170pt 131  
Retied 1-3-07 JF-RA

SE COR SW SE  
L. Erdman SET PK 1-7-99

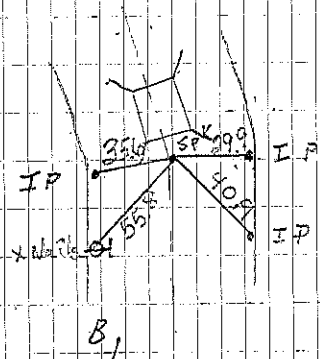
# Jacksonville N

Cor C Set 6-29-77 IP  
 Measured 40.3 ch. (2659.8 ft.)  
 south from NE cor. of sec. 28  
 fences split 3 places (33' each way)  
 for E. Set IP on S. side of  
 field Ent 6" above ground. Found 1/2" rebar  
 & placed alum. cap 4-3-00. File 2000-0606

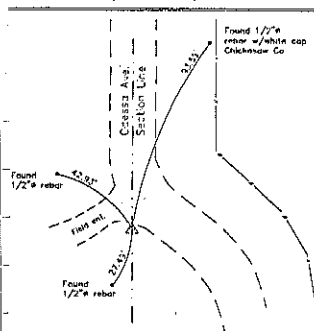
B. & C, Const. P.I. set for Bridge  
 Const. 6-29-77



Cor C  
 6-29-77



# N Sec 28



C,  
 6-29-77  
 Fekippe Eng. 4-3-00