

Jacksonville S

B. I.S.H.C. Plug 1886 Book 1 Page

B Plug STONE UNDER I.P. 1921 F.A.P. 76 Sec. C

Found hinge nail 3-26-01. File 2001-0545

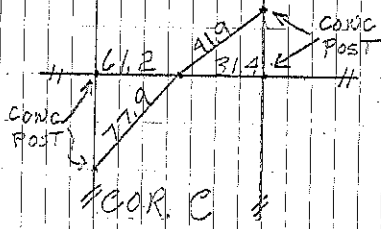
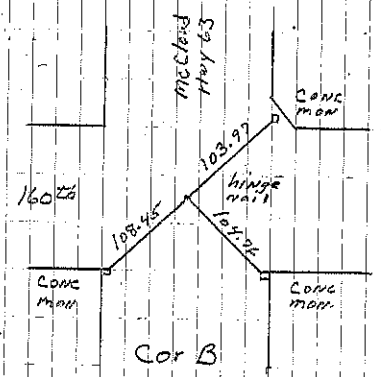
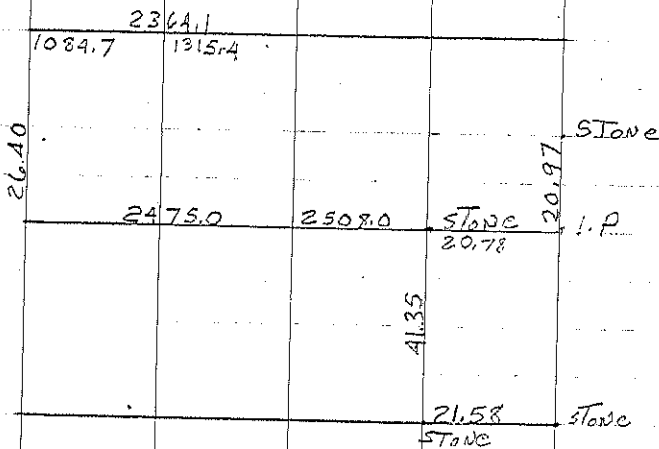
C. STAKE 1886 Book 1 page 2

C. STONE 1921 F.A.P. 76 Sec. C
Peg. over stone

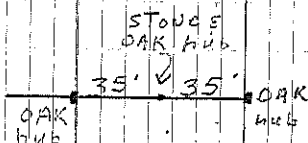
D STONE 1886 Book 1 page 2

A Found STONE placed 2"x2" OAK hub.

P.I. OAK hub with stakes to south
9.7' To North 15.9' Just south of
gate approx. 20'



Sec 18



COR. A